



# Measure E Bond Program MODESTO JUNIOR COLLEGE CAMPUS CONSTRUCTION UPDATE



## UPDATES & ACTIVITIES THAT MAY IMPACT CAMPUS OPERATION

*Week of October 10, 2011*

### AGRICULTURE MULTIPURPOSE PAVILION

**Work this week:** Continued work on punch list and clean-up. Removal of temporary fencing. Furniture installation this week.

<b>Access:</b>	No Impact
<b>Noise:</b>	Low to Moderate
<b>Parking:</b>	No Impact
<b>Utilities:</b>	No
<b>Odors:</b>	No
<b>Dust:</b>	Minimal



### ALLIED HEALTH BUILDING

**Work this week:** Working on punch list and warranty items.

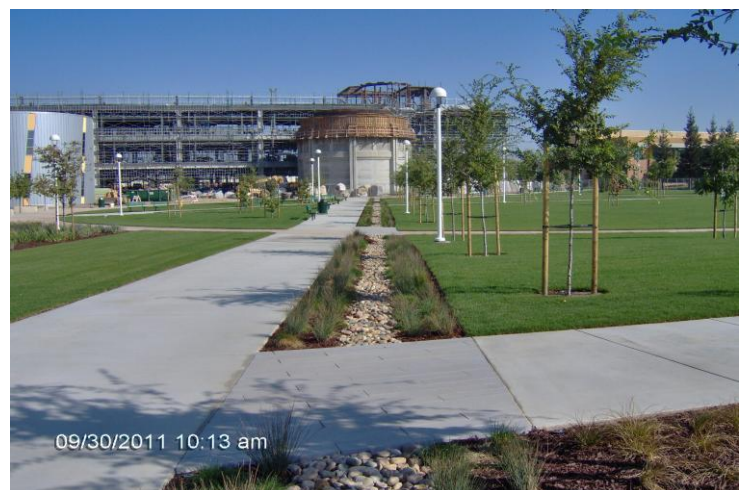
<b>Access:</b>	Caution advised at Southeast site entrance
<b>Noise:</b>	Moderate
<b>Parking:</b>	No impact
<b>Utilities:</b>	No
<b>Odors:</b>	No
<b>Dust:</b>	Minimal



### INFRASTRUCTURE INCREMENT II

**Work this week:** Paving work at G Street. Continued work at 5<sup>th</sup> Street. Punch list work at plaza

<b>Access:</b>	Traffic impact at E, F, G, Student Center Drive and Blue Gum Entrance
<b>Noise:</b>	Construction equipment.
<b>Parking:</b>	No parking at "Trailer Row".
<b>Utilities:</b>	No
<b>Odors:</b>	No
<b>Dust:</b>	High/Moderate.





# Measure E Bond Program MODESTO JUNIOR COLLEGE CAMPUS CONSTRUCTION UPDATE *continued (page 2 of 2)*

## SCIENCE COMMUNITY CENTER

**Work this week:** Place concrete, Planetarium parapet wall, Stair 1 floor, and miscellaneous column locations; Install Stair 1 stringer/tread/riser assemblies; Install metal stud framing, building exterior; Install MEP Systems, 1st, 2nd and 3rd Floors.

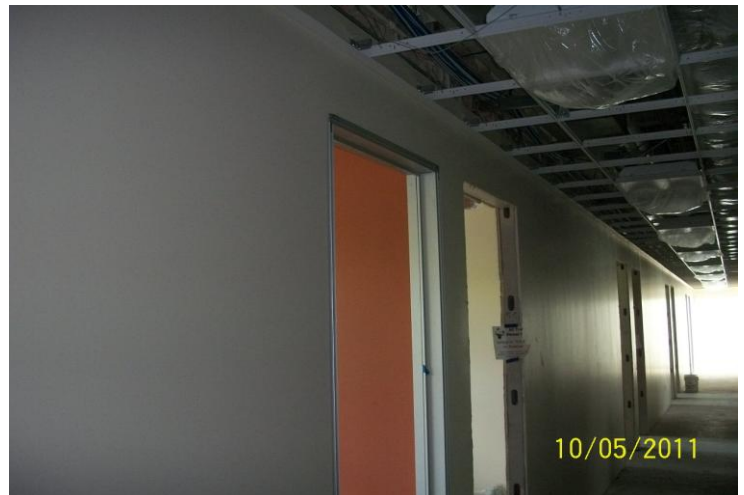
<b>Access:</b>	Moderate impact; concrete trucks
<b>Noise:</b>	Moderate impact
<b>Parking:</b>	No anticipated impact
<b>Utilities:</b>	No anticipated impact
<b>Odors:</b>	No anticipated impact
<b>Dust:</b>	No anticipated impact



## NEW STUDENT SERVICES

**Work this week:** Continuing to work on interior finishes. Contractor is continuing to work in MEP's. Also continuing with installation of decorative aluminum metal panels in court yard. Started installing interior door frames and finishes in restrooms.

<b>Access:</b>	No impact
<b>Noise:</b>	Moderate: equipment & deliveries
<b>Parking:</b>	No additional impacts
<b>Utilities:</b>	None
<b>Odors:</b>	Yes, cutting of metal materials
<b>Dust:</b>	None



## ART BUILDING LIFE SAFETY UPGRADES

**Work this week:** Continue to work on kiln yard canopy. Working on punch list items.

<b>Access:</b>	Occasional Deliveries
<b>Noise:</b>	Equipment
<b>Parking:</b>	No Impacts
<b>Utilities:</b>	None
<b>Odors:</b>	None
<b>Dust:</b>	Minimal



If there are any questions or concerns contact Kitchell CEM, Measure E Bond Construction Manager, located at 2201 Blue Gum Ave., Modesto CA 95358 Tel: 575-6991 Email [mkenedy@kitchell.com](mailto:mkenedy@kitchell.com)

