



Measure E Bond Program MODESTO JUNIOR COLLEGE CAMPUS CONSTRUCTION UPDATE



UPDATES & ACTIVITIES THAT MAY IMPACT CAMPUS OPERATION

Week of December 20, 2010

AGRICULTURE MULTIPURPOSE PAVILION

Work this week: North and South wing metal framing. Framing walls to roof line, installation of roof drains, equipment bases & roof hatch at mechanical wells. MEP rough in. Installation of roof and wall panels at North wing.

Access:	Caution at Student Center Dr. and G St.
Noise:	Low to Moderate
Parking:	No Impact
Utilities:	No
Odors:	No



ALLIED HEALTH BUILDING

Work this week: Frame interior metal stud walls, continue plastering exterior walls and soffits and continue rough-in MEP systems.

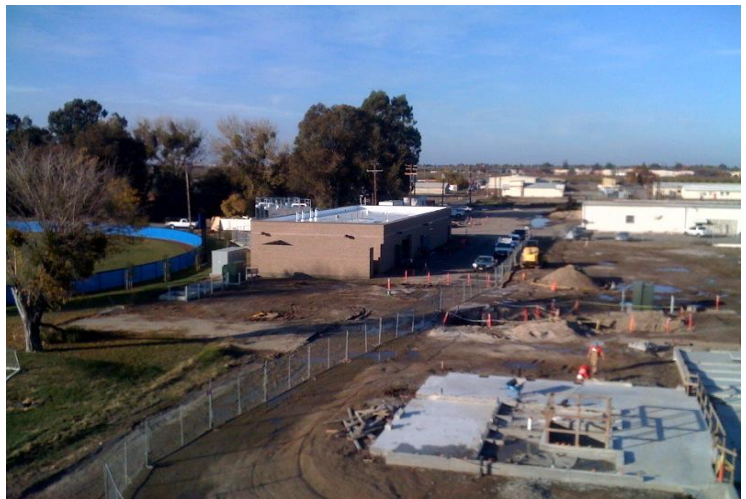
Access:	Caution advised at Southeast site entrance
Noise:	Moderate, heavy equipment
Parking:	No impact
Utilities:	No
Odors:	No
Dust:	Minimal



MECHANICAL PLANT

Work this week: Finish roughing-in MEP systems, continue installing HVAC controls and install overhead lighting.

Access:	Prohibited at E St., Caution advised around MICL bldg.
Noise:	Moderate
Parking:	Prohibited at "Trailer Row"
Utilities:	No
Odors:	No
Dust:	Moderate





Measure E Bond Program MODESTO JUNIOR COLLEGE CAMPUS CONSTRUCTION UPDATE *continued (page 2 of 3)*

INFRASTRUCTURE INCREMENT I

Work this week: Pull electrical conductors and install power switches south of Central Plant.

Access:	Caution at Student Center Dr. and 5 th St.
Noise:	Moderate
Parking:	No impact
Utilities:	No
Odors:	No
Dust:	Moderate



SCIENCE COMMUNITY CENTER

Work this week: Prepare for steel erection activities. Offsite steel fabrication. Potential concrete pour taking place dependent upon weather.

Access:	No anticipated impact
Noise:	Moderate: Crane activities and concrete truck deliveries
Parking:	No anticipated impact
Utilities:	No anticipated impact
Odors:	No anticipated impact
Dust:	Minimal



NEW STUDENT SERVICES

Work this week: Continue installing duct work on second floor. Continue framing exterior walls. Completed installation of both sets of stairs.

Access:	No impact
Noise:	Moderate: equipment & deliveries
Parking:	No additional impacts
Utilities:	None
Odors:	None
Dust:	None





Measure E Bond Program
MODESTO JUNIOR COLLEGE CAMPUS
CONSTRUCTION UPDATE
Continued (page 3 of 3)

FOUNDERS HALL RENOVATION

Work this week: Sheet rock drywall taping and structural steel for new elevator metal stud framing and mechanical electrical plumbing.

Access:	No
Noise:	Moderate: concrete trucks
Parking:	No additional impacts
Utilities:	None
Odors:	None
Dust:	Minimal



If there are any questions or concerns contact Kitchell CEM, Measure E Bond Construction Manager, located at 2201 Blue Gum Ave., Rm #1301, Modesto CA 95358 Tel: 575-6991 Email tmillman@kitchell.com

