



# Measure E Bond Program MJC AGRICULTURAL MULTIPURPOSE PAVILION CONSTRUCTION UPDATE

Issue No. 3

**OCTOBER 30, 2009**

## MJC AGRICULTURAL MULTIPURPOSE PAVILION

### 1. Work performed during week of 10/26/09:

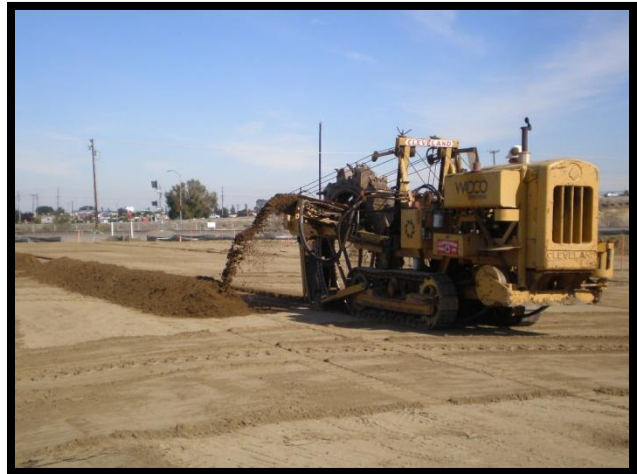
- A. Complete import fill operations.
- B. Certify building pad.
- C. Survey building grid lines.
- D. Layout and dig footings.



**Survey Grid Lines**

### 2. Work anticipated for week of 11/2/09:

- A. Layout and dig spread footings.
- B. Pour lean mix concrete.
- C. Install rebar at footings.



**Excavate Footings**

## ACTIVITIES THAT MAY IMPACT CAMPUS OPERATIONS



**Access:** No.  
**Noise:** Heavy equipment operation.  
**Parking:** No impact.  
**Water off:** No.  
**Odors:** No.  
**Dust:** Dust from trenching activities.  
**Power outages:** No.



If there are any questions or concerns contact Kitchell CEM, Measure E Bond Construction Manager, located at 2201 Blue Gum Ave., Rm #1301, Modesto CA 95358 Tel: 575-6991 Email [tmillman@kitchell.com](mailto:tmillman@kitchell.com)

