

**Yosemite Community College District
Measure E Bond Program**

**February 2013
Issue 29**

Project Team

Owner

Yosemite Community College District

Program Manager

Kitchell, CEM

Construction Manager

Kitchell, CEM

Architects

ANOVA Nexus

Associated Engineering

Grothe & Smith

Darden

Lionakis

LPA S

tBP

Noll & Tam

Perkins+Will

Paul Roberts & Partners

Program Budget Summary

Program Start Date

June 1, 2005

Anticipated Completion Date

July 27, 2015

Original Program Budget

\$ 326,174,000.00

Approved Budget Changes

\$ 0.00

Columbia College

\$ 0.00

Central Services

\$ 20,000,000.00

Total Changes to Date

\$ 20,000,000.00

New Program Budget

\$ 346,174,000.00

Total Expenditures (October 31, 2012)

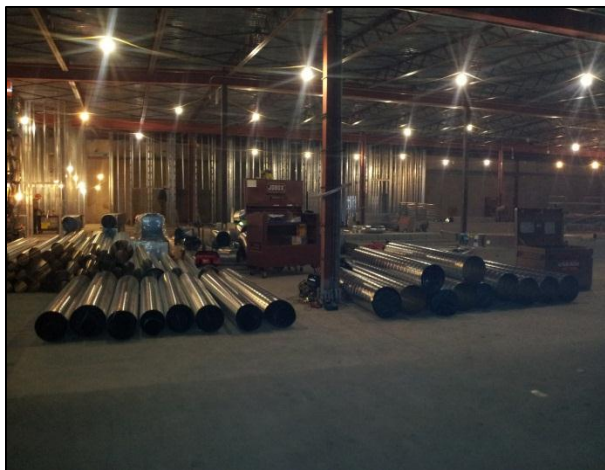
\$ 233,439,732.73

Encumbrances

\$ 26,100,121.29

Balances to Complete Program

\$ 86,634,145.98



Library Renovation Project, MJC East Campus



Primary Data Center, Central Services



Agriculture Fencing & Feed Lot Projects, MJC West Campus



Science Community Center, MJC West Campus

**Yosemite Community College District
Measure E Bond Program**

**February 2013
Issue 29**

YCCD Measure E Budgets and Schedules ⁽¹⁰⁾	Measure E Budget (1)	Total Budget (2)	Total Construction Budget (3)	Bid Day Budget/ Construction Contract (4)	Cost/ Square Foot												
						2011				2012				2013			
						Q1	Q2	Q3	Q4	Q1	Q2	Q3	Q4	Q1	Q2	Q3	Q4
MODESTO JUNIOR COLLEGE																	
Auditorium	\$ 19,566,200	\$ 33,093,000	\$ 31,160,000	\$ 26,990,000	\$ 591	COMPLETE											
Ag-Modular Living Units	\$ 3,149,907	\$ 3,149,907	\$ 2,332,422	\$ -	\$ 65	COMPLETE											
Site Units				\$ 1,402,000	\$ 139												
Ag-Animal Facilities Renovation	\$ 2,150,000	\$ 2,150,000	\$ 1,802,500	\$ 1,530,020	\$ 34	COMPLETE											
Ag Multipurpose Pavilion Facility	\$ 17,659,690	\$ 17,659,690	\$ 11,252,827	\$ 8,243,000	\$ 137	COMPLETE											
Allied Health Life Sciences	\$ 25,360,225	\$ 25,360,225	\$ 16,396,678	\$ 10,266,000	\$ 294	COMPLETE											
Redbud Distance Education														Complete July 2013			
Art Building	\$ 579,379	\$ 579,379				COMPLETE											
Campus Way Parking Lot	\$ 1,565,028	\$ 1,565,028	\$ 565,000	\$ 320,623	\$ 5	COMPLETE											
Founders Hall Modernization	\$ 12,065,000	\$ 12,065,000	\$ 8,945,078	\$ 6,598,000	\$ 93	COMPLETE											
High Tech Center (North Hall)	\$ 16,000,000	\$ 16,000,000	\$ 12,589,366	\$ 9,811,997	\$ 179												
Interim Housing	\$ 3,000,000	\$ 3,000,000	\$ 2,253,000	\$ 1,738,419	\$ 44	COMPLETE											Complete August 2014
Library/Learning Resources Ctr (6)	\$ 9,495,145	\$ 9,495,145	\$ 7,080,514	\$ 4,800,000	\$ 104									Complete September 2013			
Loop Road/Infrastructure (Increment I)	\$ 4,480,122	\$ 4,480,122	\$ 3,850,000	\$ 2,099,000	n/a	COMPLETE											
Loop Road/Infrastructure (Increment II)	\$ 4,480,122	\$ 4,480,122	\$ 3,850,000	\$ 2,555,000	n/a									Complete March 2013			
Parking Structure/Lot	\$ 3,916,895	\$ 3,916,895	\$ 2,080,798	\$ 1,194,419	n/a	COMPLETE											
Patterson Educational Site	\$ 5,037,370	\$ 5,037,370	\$ 3,803,872	\$ 3,137,146	\$ 325									Complete March 2014			
Science Community Center & GVM	\$ 70,000,000	\$ 70,000,000	\$ 51,050,342	\$ 35,212,250	\$ 321									Complete November 2012			
Outdoor Education														Complete November 2013			
Softball Complex Field Concessions	\$ 1,550,264	\$ 1,550,264	\$ 699,343	\$ 603,420	n/a												
			\$ 481,472	\$ 421,165	\$ 390	COMPLETE											
Student Center/Career Transfer	\$ 450,000	\$ 450,000	\$ 450,000	\$ 450,000	n/a									Complete July 2013			
Student Services New	\$ 14,523,403	\$ 14,523,403	\$ 12,078,487	\$ 6,716,223	\$ 280									Complete January 2012			
Turlock Educational Site	\$ 937,185	\$ 937,185	\$ 937,185	\$ 937,185	n/a									Complete TBD			
West Campus Parking Lot	\$ 950,000	\$ 950,000												Complete December 2012			
College Contingency	\$ 3,294,065	\$ 3,294,065															
SUBTOTAL - Modesto Junior College	\$ 220,110,000	\$ 233,636,800															
COLUMBIA COLLEGE																	
Bike Lanes and Pedestrian Paths	\$ 18,957	\$ 18,957	\$ 484,703	\$ 478,858	n/a	COMPLETE											
Bus Service Loop/Disabled Parking Lot	\$ 678,895	\$ 678,895				COMPLETE											
Calaveras Educational Site	\$ 4,000,000	\$ 4,000,000	\$ 1,924,350	\$ 1,555,000	\$ 154									Complete March 2014			
Child Development Center	\$ 8,934,757	\$ 8,934,757	\$ 6,809,538	\$ 5,804,000	\$ 397	COMPLETE											
Madrone Building Modernization	\$ 2,922,998	\$ 2,922,998	\$ 2,767,566	\$ 1,695,552	\$ 224	COMPLETE											
Manzanita Building	\$ 9,593,158	\$ 9,593,158	\$ 7,185,000	\$ 6,000,000													
Oakdale Educational Site	\$ 1,000,000	\$ 1,000,000	\$ 1,000,000	\$ 1,000,000	n/a									Complete TBD			Complete July 2015
Parking Lots	\$ 198,190	\$ 198,190	\$ 198,190	\$ 198,190	n/a	COMPLETE											
Public Safety Center	\$ 2,145,553	\$ 2,145,553	\$ 1,668,952	\$ 1,502,423	\$ 255	COMPLETE											
Science Natural Resources	\$ 17,900,000	\$ 17,900,000	\$ 13,002,549	\$ 11,481,608	\$ 341	COMPLETE											
Secondary Access Road	\$ 520,163	\$ 520,163				COMPLETE											
Sequoia Building	\$ 1,377,725	\$ 1,377,725	\$ 912,000	\$ 750,000										Complete March 2014			
College Contingency	\$ 3,204,604	\$ 3,204,604															
SUBTOTAL - Columbia College	\$ 52,495,000	\$ 52,495,000															

If you have any questions or concerns about ongoing activities or would like to get additional information about ongoing design projects, please contact Kitchell, CEM at 575-6991.

**Yosemite Community College District
Measure E Bond Program**

**February 2013
Issue 29**

YCCD Measure E Budgets and Schedules ⁽¹⁰⁾	Measure E	Total	Total Construction	Bid Day Budget/ Construction Contract (4)	Cost/ Square Foot																				
	Budget (1)	Budget (2)	Budget (3)			2011		2012		2013		2014		2015											
						Q1	Q2	Q3	Q4	Q1	Q2	Q3	Q4	Q1	Q2	Q3	Q4	Q1	Q2	Q3	Q4	Q1	Q2	Q3	Q4
CENTRAL SERVICES																									
Ag Temp Housing	\$	65,877	\$	65,877																					
Art Building (8)	\$	600,000	\$	600,000																					
Capital Outlay Debt Service	\$	14,435,000	\$	14,435,000																					
Central Services Buildings	\$	14,900,000	\$	14,900,000																					
Central Services Master Plan	\$	82,500	\$	82,500																					
DTSC	\$	1,300,000	\$	1,300,000																					
Primary Data Center	\$	8,000,000	\$	8,000,000																					
Scheduled Maintenance	\$	10,000,000	\$	10,000,000																					
Secondary Data Center	\$	3,500,000	\$	3,500,000																					
Technology Infrastructure	\$	10,000,000	\$	10,000,000																					
Shipping and Receiving [new]	\$	5,500,000	\$	5,500,000	\$	4,267,067	\$	3,831,879	\$	220															
CC Facilities Operations Office	\$	1,000,000	\$	1,000,000	\$	675,000	\$	675,000	\$	703															
Patterson Planning	\$	1,093,484	\$	1,093,484																					
Central Services Contingency (7)	\$	3,092,139	\$	3,092,139																					
SUBTOTAL - Central Services	\$	73,569,000	\$	73,569,000	(includes \$20M investment income)																				
Total Projects Budget	\$	346,174,000	\$	369,700,800																					
Original Measure E Bond	\$	326,174,000																							
LEGEND						FOOTNOTES																			
Design/ Approvals/ Bidding/ Site Procurement						(1) Total project budget as adopted by the Board of Trustees (1/11/2012).																			
						(2) Total project funding available to the project, including any local, state and grant funding.																			
						(3) Includes Group II, change order contingency and moving costs.																			
						(4) Bid day target that includes current day projected costs plus any escalation.																			
						(5) Not used.																			
						(6) Design duration includes state FPP submittal and review period from July 08 to January 2009.																			
						(7) Contingencies include both colleges and Central Services.																			
						(8) Art Building funded by MJC and Central Services.																			
						(9) Previous expenditures.																			
						(10) Document amended per Board of Trustees approved Program Management Plan (5/11/11).																			
Kitchell CEM 12/18/2012																									

Projects Under Construction

Columbia College:
Water Tank Replacement
(Scheduled Maintenance).

Modesto Junior College:
Ag Multipurpose Pavilion Fencing
and Feedlot.
East Campus Library Renovation.
Science Community Center.

Central Services:
Primary Data Center.
Shipping and Receiving.

Measure E Bond Projects Completed

Columbia College	Modesto Junior College	Scheduled Maintenance
Bus Service Loop	Ag Animal Fencing	CC Re-Roof Madrone/ Buckeye
Child Development Center	Agriculture Housing	CC Sewer Pump Replacement
Logistics Center	Ag Multipurpose	MJC Roof Drains
Madrone Building	Pavilion Bleachers	MJC Student Center HVAC
Pinyon Relocation	Ag Multipurpose	
Public Safety Center	Pavilion Parking Lot	
Science & Natural	Allied Health	
Resources Center	Art Life Safety Upgrade	
Secondary Access Road	Auditorium Project	
Site Power Infrastructure	Campus Way Parking Lot	
	Central Plant	
	Founders Hall	
	Infrastructure Increment I	
	Interim Housing Phase I	
	East Campus Parking Lot	
	Softball Complex	
	Utility Infrastructure/ Cabling	
	West Campus Parking Lot	