



Measure E Bond Program COLUMBIA COLLEGE CAMPUS CONSTRUCTION UPDATE



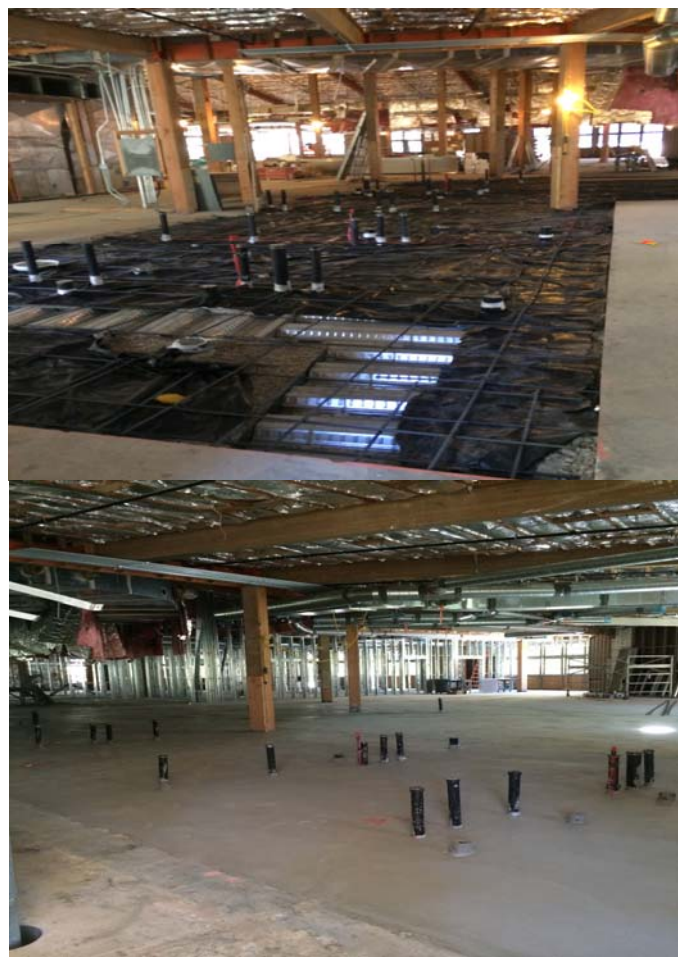
UPDATES & ACTIVITIES THAT MAY IMPACT CAMPUS OPERATION

Week of June 30, 2014

Manzanita Building Modernization

Work this week: Concrete has been set for floors that were demoed for plumbing. Electrical, mechanical and fire sprinkler installation continues for the upcoming week. We began to frame walls and that will continue for the upcoming weeks.

Access:	Caution is advised when entering the site due to tripping hazards.
Noise:	Moderate to extreme noise could occur occasionally due to site related activities.
Parking:	Low impact.
Dust:	Moderate impact due to site related construction activities.
Odors:	Low Impact
Utilities:	None anticipated.



Water Tank Revitalization

Work this week: The remaining work of grounding & finishing landscaping around the tank was completed this week to bring this project to 100% completion. No more work is schedule for the water tank.

Access: No impact.
Noise: No impact.
Parking: No impact.
Dust: No impact.
Odors: No Impact.
Utilities: No impact.



Roadways Phase II

Work this week: Truncated domes are on-site & will be installed the coming week. The CMU wall across student housing has been completed. Most of the roads have been pulverized & compacted for the installation of asphalt to commence. Madrone road will be closed for it to be pulverized & compacted first week of July.

Access: Caution is advised when entering the site due to traffic detours & worker/equipment exposure.

Noise: Moderate to extreme noise could occur occasionally due to site related activities.

Parking: High impact; road closures & detours have been implemented. Bulletins of these closures/detours have been delivered to the District for distribution.

Dust: Moderate impact due to site related construction activities.

Odors: Low Impact

Utilities: None anticipated.



If there are any questions or concerns contact Kitchell CEM, Measure E Bond Construction Manager, located at
11600 Columbia College Drive Dr., Sonora CA 95370 Tel: 209-575-7927 Email rmartin@kitchell.com

