

Measure E Bond Program Projects

PROGRAM PROGRESS

Calaveras Educational Site: This project is in the programming phase.

Oakdale Educational Site: The Columbia College and Yosemite Community College District continue to review possible sites in the Oakdale area for the development of a future outreach facility there.

Roadways Phase III: Design Development has begun. Construction is anticipated for the spring/summer of 2015.

CONSTRUCTION PROGRESS

Manzanita Building Modernization:

Construction is underway and it is anticipated to be completed June of 2015.

Roadways Phase II: Madrone Road Project is out for bid with construction anticipated to start in December 2014.

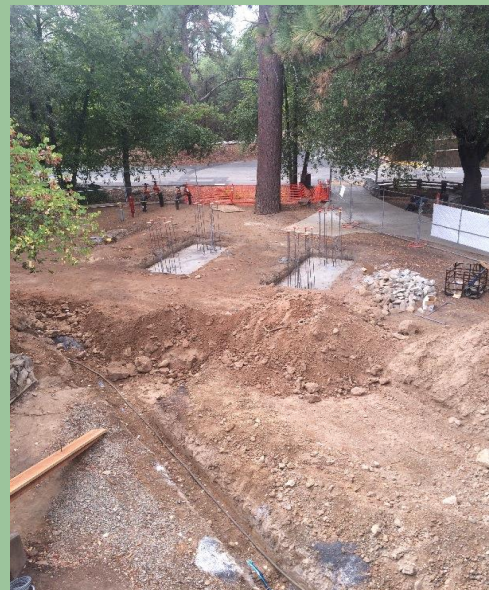
COMPLETED PROJECTS:

- ✓ Bus Service Loop
- ✓ Child Development Center
- ✓ Gas Line Replacement
- ✓ Logistics Center (Facilities Office Building)
- ✓ Mahogany (Madrone) Building
- ✓ Nursing Cohort/Redbud Building
- ✓ Pinyon Relocation
- ✓ Public Safety Center
- ✓ Roadways Phase I
- ✓ Secondary Data Center
- ✓ Sequoia Modernization
- ✓ Science & Natural Resources
- ✓ Secondary Access Road
- ✓ Site Power Infrastructure
- ✓ Water Tank Replacement

MANZANITA BUILDING MODERNIZATION



Center of Rotunda



Foundation of Entry Archway