



Measure E Bond Program COLUMBIA COLLEGE CAMPUS CONSTRUCTION UPDATE



UPDATES & ACTIVITIES THAT MAY IMPACT CAMPUS OPERATION *Week of May 23, 2011*

SCIENCE AND NATURAL RESOURCES BUILDING

Work this week: Mechanical, Plumbing, and Electrical (MEP) work in the ceilings, attics, and interior finishes continue. Exterior painting will continue this week. Testing and flushing of wet and dry mechanical systems continues this week. Flooring grinding and preparation continues on second floor. Moisture seal has been installed on first floor allowing vinyl flooring to begin this week.

Site work: Major road work continues this week with intermittent closure of the main loop road in front of Redbud and Sequoia. Concrete curb and gutter formwork will begin in the main road. The main loop road will continue to be impacted or blocked intermittently from demolition, grading, concrete and asphalt through June 10th. Some dust and noise may be experienced. Boom lifts are still being utilized for exterior areas for second floor access to exterior finishes.

Access: Main Loop Road is closed

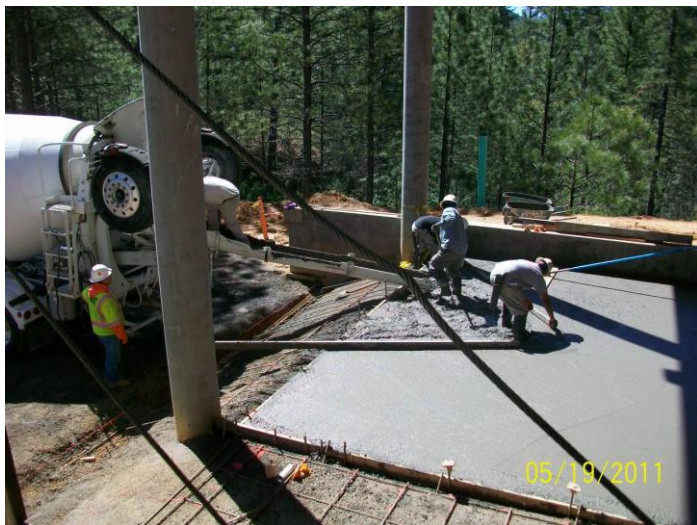
Noise: High - Heavy Equipment

Parking: Moderate Impact

Utilities: No Impact

Odors: Low Impact

Dust: Moderate to heavy impacts from grading



If there are any questions or concerns contact Kitchell CEM, Measure E Bond Construction Manager, located at 2201 Blue Gum Ave., Modesto CA 95358 Tel: 575-6991 Email tmillman@kitchell.com

