



## Measure E Bond Program COLUMBIA COLLEGE CAMPUS CONSTRUCTION UPDATE



### UPDATES & ACTIVITIES THAT MAY IMPACT CAMPUS OPERATION *Week of April 18, 2011*

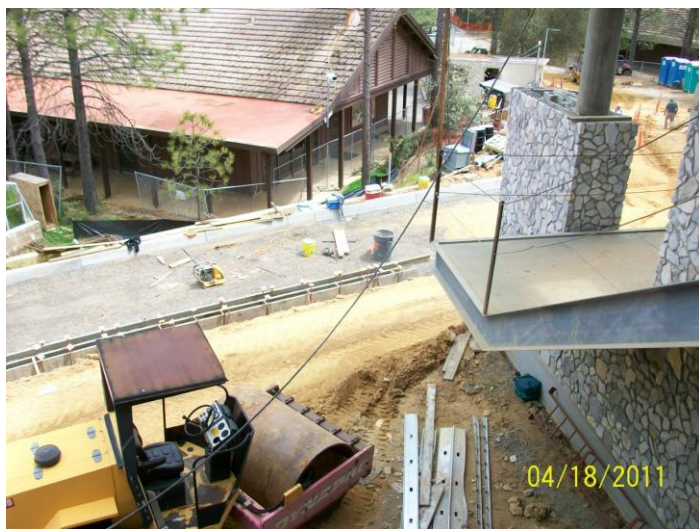
#### SCIENCE AND NATURAL RESOURCES BUILDING

**Work this week:** Mechanical, Plumbing, and Electrical (MEP) work in the ceilings, attics, and interior finish continues. Installations of the T-Bar dropped ceiling grid is complete. Casework installations will continue on the first and second floors. Tile work in the restrooms is complete on the first floor and started on the second floor. Stucco finishes on the first floor walls, columns and soffits will continue this week. Low voltage wire pulls will continue this week in the ceilings.

**Site work:** Clear weather has allowed the site work to proceed again with grading and road curbs. Some dust may be experienced. Boom lifts are still being utilized for exterior areas for second floor access to exterior finishes. Major road work at the parking area of the main entry will be put off until after the end of the spring semester to avoid impact to the college.

**Access:** Moderate Impact  
**Noise:** Moderate Impact  
**Parking:** Moderate Impact

**Utilities:** No Impacts  
**Odors:** No Impacts  
**Dust:** Moderate impacts are anticipated with grading



If there are any questions or concerns contact Kitchell CEM, Measure E Bond Construction Manager, located at 2201 Blue Gum Ave., Modesto CA 95358 Tel: 575-6991 Email [tmillman@kitchell.com](mailto:tmillman@kitchell.com)

