



## Measure E Bond Program COLUMBIA COLLEGE CAMPUS CONSTRUCTION UPDATE



### UPDATES & ACTIVITIES THAT MAY IMPACT CAMPUS OPERATION

*Week of February 14, 2011*

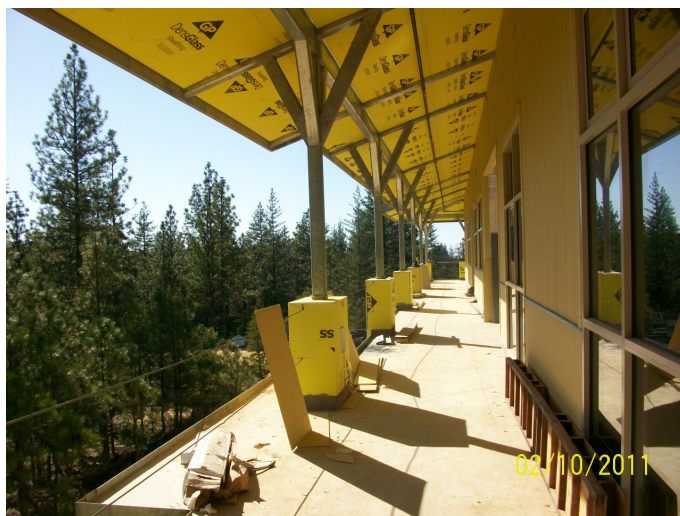
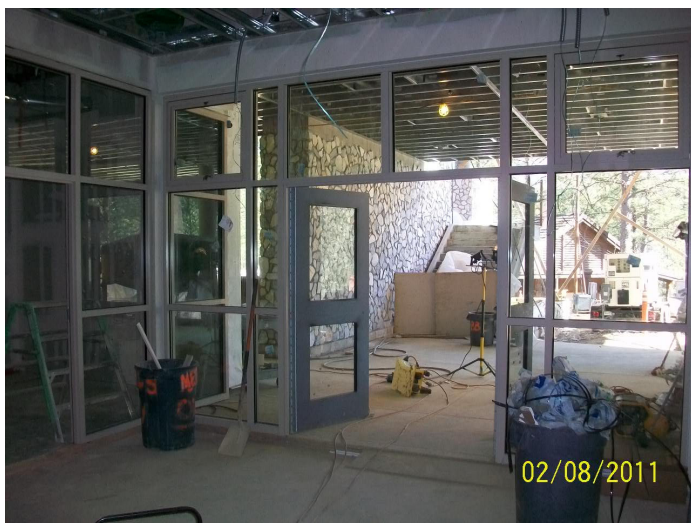
#### SCIENCE AND NATURAL RESOURCES BUILDING

**Work this week:** Installation of plumbing, electrical and HVAC installations continues on first and second floors and the roof. Drywall finishes continue on the first floor. Second floor drywall is 75% complete. Exterior doors and storefront glazing continue throughout the building. The standing seam metal roofing continues over the wood roof at the entry and is 95% complete. All skylights are approximately 95% complete. The scaffolding for stucco is being assembled for exterior walls and ceilings

**Site work:** Rock veneer installations are 95% complete at the stair walls and columns. Roadwork is still on hold as the priorities move to the interior finishes.

**Access:** Moderate Impact  
**Noise:** Moderate Impact  
**Parking:** Moderate Impact

**Utilities:** No Impacts  
**Odors:** No Impacts  
**Dust:** No Impacts



If there are any questions or concerns contact Kitchell CEM, Measure E Bond Construction Manager, located at 2201 Blue Gum Ave., Modesto CA 95358 Tel: 575-6991 Email [tmillman@kitchell.com](mailto:tmillman@kitchell.com)

