



Measure E Bond Program COLUMBIA COLLEGE CAMPUS CONSTRUCTION UPDATE



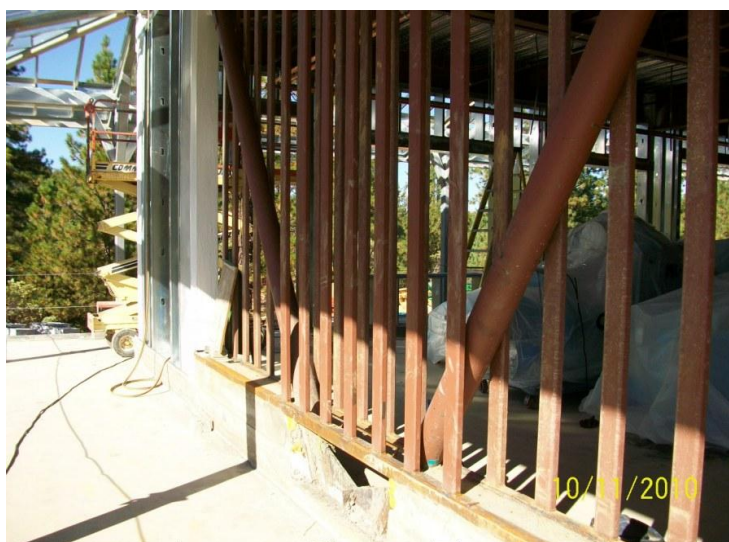
UPDATES & ACTIVITIES THAT MAY IMPACT CAMPUS OPERATION

Week of October 18, 2010

SCIENCE AND NATURAL RESOURCES BUILDING

Work this week: Metal stud framing, plumbing, electrical and HVAC installation on the first and second floors and the roof. Site work: Installing concrete sidewalks and first floor stair landing.

Access:	Moderate
Noise:	Moderate
Parking:	No
Utilities:	No
Odors:	No
Dust:	Minimal



If there are any questions or concerns contact Kitchell CEM, Measure E Bond Construction Manager, located at 2201 Blue Gum Ave., Modesto CA 95358 Tel: 575-6991 Email tmillman@kitchell.com

