



Measure E Bond Program COLUMBIA COLLEGE CAMPUS *CONSTRUCTION UPDATE*



UPDATES & ACTIVITIES THAT MAY IMPACT CAMPUS OPERATION

Week of February 16, 2015

Manzanita Building Modernization

Work this week: Painting is bringing the building to full life & will come to a close the end of this week. Light fixtures & outlets will continue to be installed throughout the week. T-bar grid installation in the rooms has made stupendous progress & will continue to run along. Rough-in of mechanical work continues downstairs. We will also begin to install tile in the restrooms.

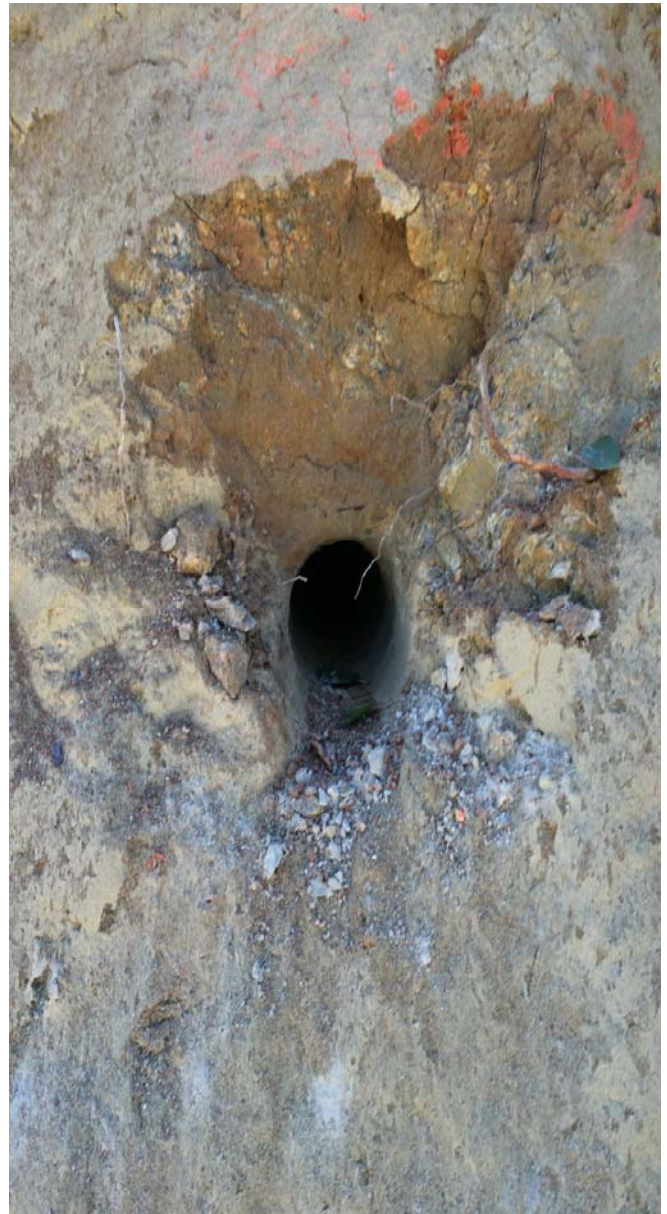
Access:	Caution is advised when entering the site due to tripping hazards.
Noise:	Moderate to extreme noise could occur occasionally due to site related activities.
Parking:	Low impact.
Dust:	Moderate impact due to site related construction activities.
Odors:	Low Impact
Utilities:	None anticipated.



Roadways Madrone Road

Work this week: Our newest project has broken ground & construction is underway! We are working on Madrone Road. Currently we have traffic control set up for vehicular traffic. A portion of the hillside on the West side of Madrone Road has been cleared & grubbed. It has been formed to commence the drilling of various holes along the wall which have been marked. The drilling will run through the week.

Access: Caution is advised when entering the site due to construction all along the hillside.
Noise: Moderate to extreme noise could occur occasionally due to site related activities.
Parking: Low impact.
Dust: Moderate impact due to site related construction activities.
Odors: Low Impact
Utilities: None anticipated.



If there are any questions or concerns contact Kitchell CEM, Measure E Bond Construction Manager, located at 11600 Columbia College Drive Dr., Sonora CA 95370 Tel: 209-575-7927 Email rmartin@kitchell.com

