



Measure E Bond Program COLUMBIA COLLEGE CAMPUS *CONSTRUCTION UPDATE*



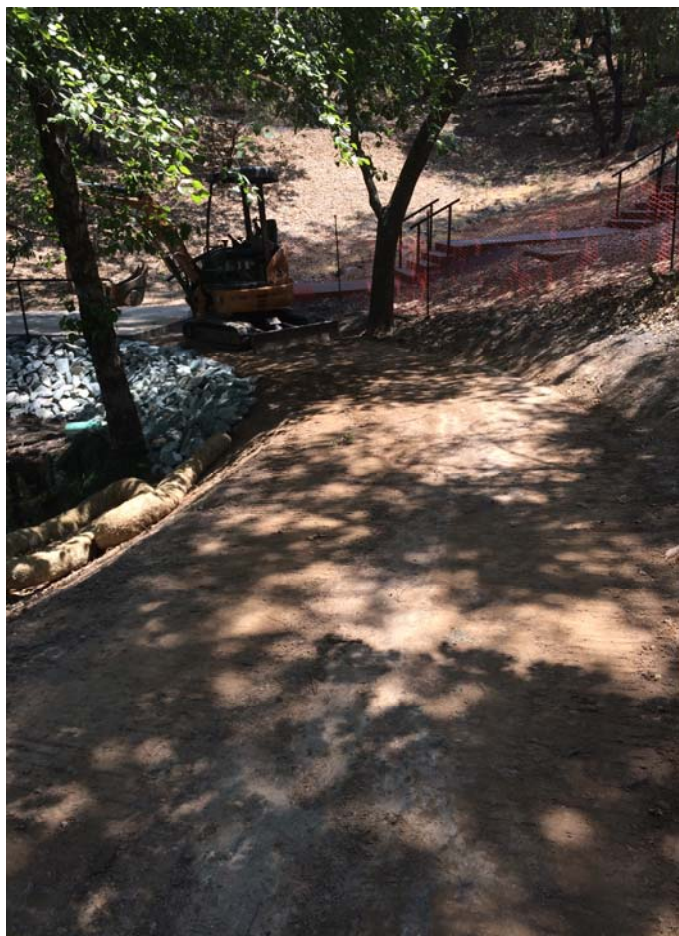
UPDATES & ACTIVITIES THAT MAY IMPACT CAMPUS OPERATION

Week of August 11, 2014

Manzanita Building Modernization

Work this week: Roofing work is well underway and will continue for this week. As the prior week, electrical & mechanical work will continue. Caution is advised as site work has wrapped around the North side of Manzanita behind the snack bar. The snack bar & culinary arts will be closed this week due to work commencing in those rooms.

| | |
|-------------------|--|
| Access: | Caution is advised when entering the site due to tripping hazards. |
| Noise: | Moderate to extreme noise could occur occasionally due to site related activities. |
| Parking: | Low impact. |
| Dust: | Moderate impact due to site related construction activities. |
| Odors: | Low Impact |
| Utilities: | None anticipated. |



Roadways Phase II

Work this week: All striping work is complete. For this week we will be doing some electrical work which involves changing the light pole fixtures in the parking lots.

Access: Caution is advised when entering the site due to worker/equipment exposure.

Noise: Moderate to extreme noise could occur occasionally due to site related activities.

Parking: Parking will not be affected as all roads in the parking lot are now open. However caution is advised as workers will put cones around the area of work on the light poles.

Dust: Moderate impact due to site related construction activities.

Odors: Low Impact

Utilities: None anticipated.



If there are any questions or concerns contact Kitchell CEM, Measure E Bond Construction Manager, located at
11600 Columbia College Drive Dr., Sonora CA 95370 Tel: 209-575-7927 Email rmartin@kitchell.com

