



Measure E Bond Program COLUMBIA COLLEGE CAMPUS *CONSTRUCTION UPDATE*



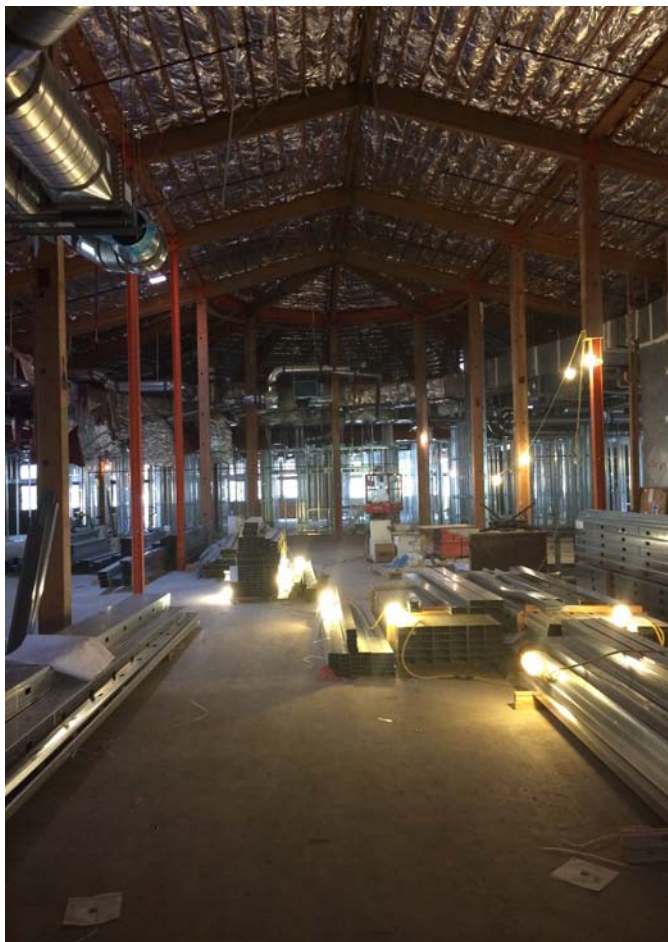
UPDATES & ACTIVITIES THAT MAY IMPACT CAMPUS OPERATION

Week of August 4, 2014

Manzanita Building Modernization

Work this week: We will commence roofing work this week. Outside of Manzanita we will begin to install the gutter as well as form & pour the concrete pathway. Framing continues for the next week along with electrical & mechanical work.

Access:	Caution is advised when entering the site due to tripping hazards.
Noise:	Moderate to extreme noise could occur occasionally due to site related activities.
Parking:	Low impact.
Dust:	Moderate impact due to site related construction activities.
Odors:	Low Impact
Utilities:	None anticipated.



Roadways Phase II

Work this week: Most of the striping work has been completed & should be coming to a close this coming week. Stop signs around campus will begin to be re-striped. Electrical work will continue for this week as well.

Access: Caution is advised when entering the site due to traffic detours & worker/equipment exposure.

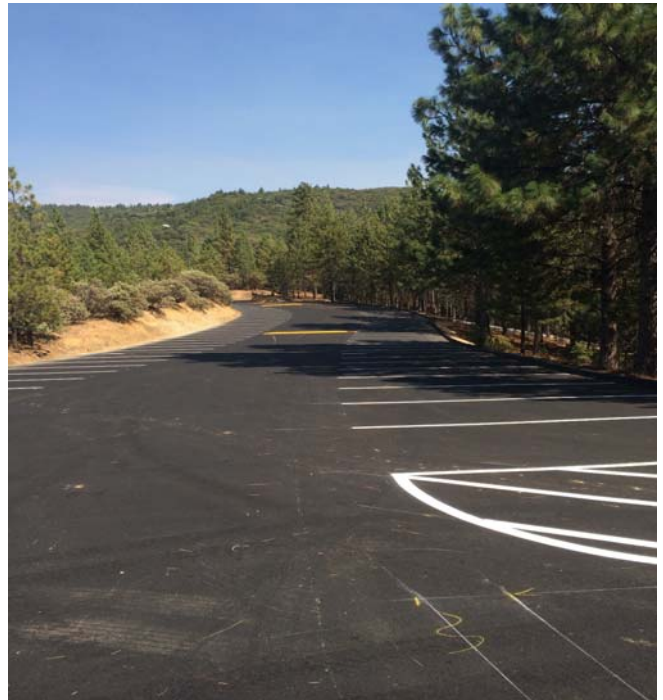
Noise: Moderate to extreme noise could occur occasionally due to site related activities.

Parking: High impact; road closures & detours have been implemented. Bulletins of these closures/detours have been delivered to the District for distribution.

Dust: Moderate impact due to site related construction activities.

Odors: Low Impact

Utilities: None anticipated.



If there are any questions or concerns contact Kitchell CEM, Measure E Bond Construction Manager, located at
11600 Columbia College Drive Dr., Sonora CA 95370 Tel: 209-575-7927 Email rmartin@kitchell.com

