



Measure E Bond Program COLUMBIA COLLEGE CAMPUS *CONSTRUCTION UPDATE*



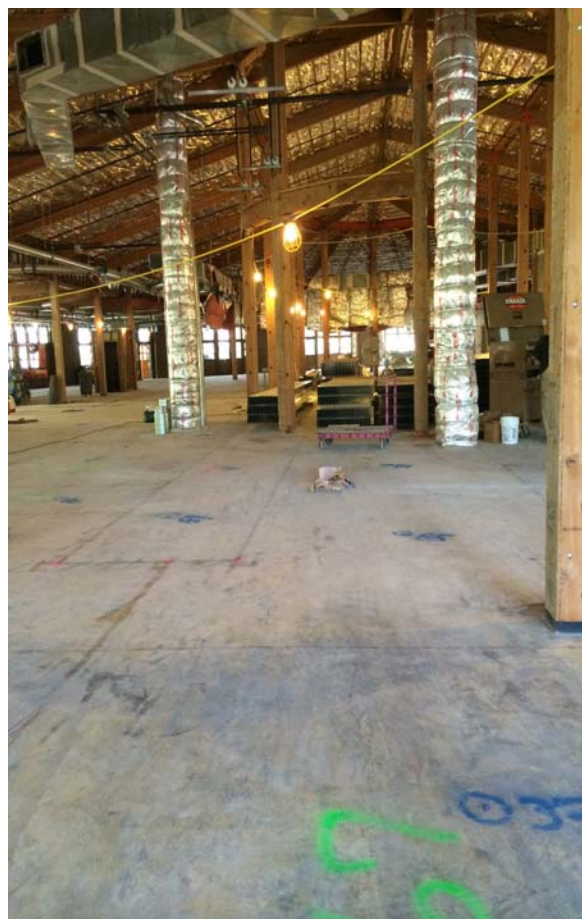
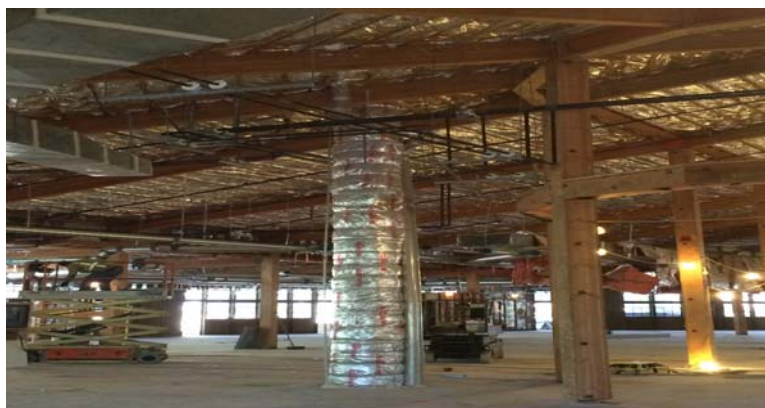
UPDATES & ACTIVITIES THAT MAY IMPACT CAMPUS OPERATION

Week of June 23, 2014

Manzanita Building Modernization

Work this week: This past week rough-in of sprinklers came to a close. We will continue to work on roughing in mechanical & electrical. Framing of soffits and walls will also continue. Great progress has been made in these areas as the interior of the building is evolving into a new appearance.

Access:	Caution is advised when entering the site due to tripping hazards.
Noise:	Moderate to extreme noise could occur occasionally due to site related activities.
Parking:	Low impact
Dust:	Moderate impact due to site related construction activities.
Odors:	Low Impact
Utilities:	None anticipated.



Water Tank Revitalization

Work this week: Ground rods began to be installed this week as shown below. Full construction assembly of the tank should be coming to a close this week.

Access: Low impact to due to worker mobilization.
Noise: Low impact.
Parking: Low impact.
Dust: Low impact.
Odors: No Impact.
Utilities: No impact to utilities is anticipated.



Roadways Phase II

Work this week: Columbia College's newest project, "Roadways Phase II" broke ground on the 16th... literally! Pavement in front of student housing was demoed & foundations were constructed for the installation of truncated domes. These truncated domes are due to be installed next week. West of the Student Housing, a concrete pad for a trash enclosure has also been constructed. Progress photos of each area are shown in each row moving downwards.

Access: Caution is advised when entering the site due to traffic detours & worker/equipment exposure.

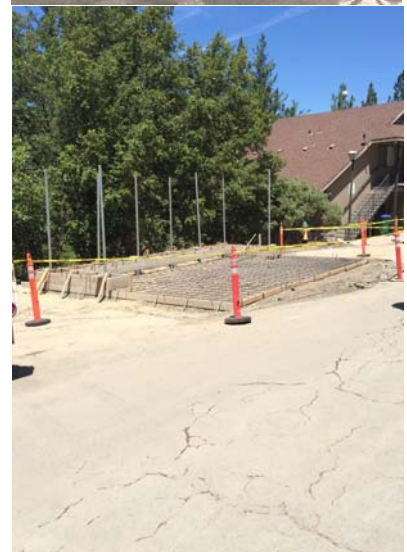
Noise: Moderate to extreme noise could occur occasionally due to site related activities.

Parking: High impact; road closures & detours have been implemented. Bulletins of these closures/detours have been sent out to the District for distribution.

Dust: Moderate impact due to site related construction activities.

Odors: Low Impact

Utilities: None anticipated.



If there are any questions or concerns contact Kitchell CEM, Measure E Bond Construction Manager, located at
11600 Columbia College Drive Dr., Sonora CA 95370 Tel: 209-575-7927 Email rmartin@kitchell.com

