

# MJC Measure E Bond Program

**Board Update**

February 6, 2008

Building High Quality Facilities For

**E X C E L L E N C E**  
I N E D U C A T I O N



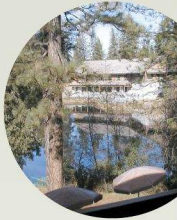
Yosemite Community  
College District





Yosemite Community  
College District

# Public Safety Building



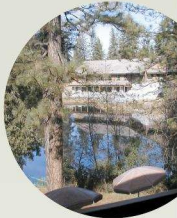
## *Project Goals*

- Co-locate all emergency services in a central location
- Improve response times
- Shelter all fire fighting apparatus
- Provide housing for both men and women



Yosemite Community  
College District

# Public Safety Building



## Project Schedule

- PMP shows start of construction August 2008
- Swing Space is nearly complete
- Hazardous Material removal to start mid-February
- Construction to begin end of March, 2008, five months ahead of schedule.

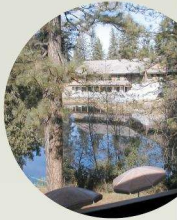
Yosemite CCD	2006				2007				2008				2009				2010				2011				2012				2013							
1/24/2008	Q1	Q2	Q3	Q4	Q1	Q2	Q3	Q4	Q1	Q2	Q3	Q4	Q1	Q2	Q3	Q4	Q1	Q2	Q3	Q4	Q1	Q2	Q3	Q4	Q1	Q2	Q3	Q4	Q1	Q2	Q3	Q4	Q1	Q2	Q3	Q4
Public Safety Building																																				





Yosemite Community  
College District

# Public Safety Building



## Project Committee

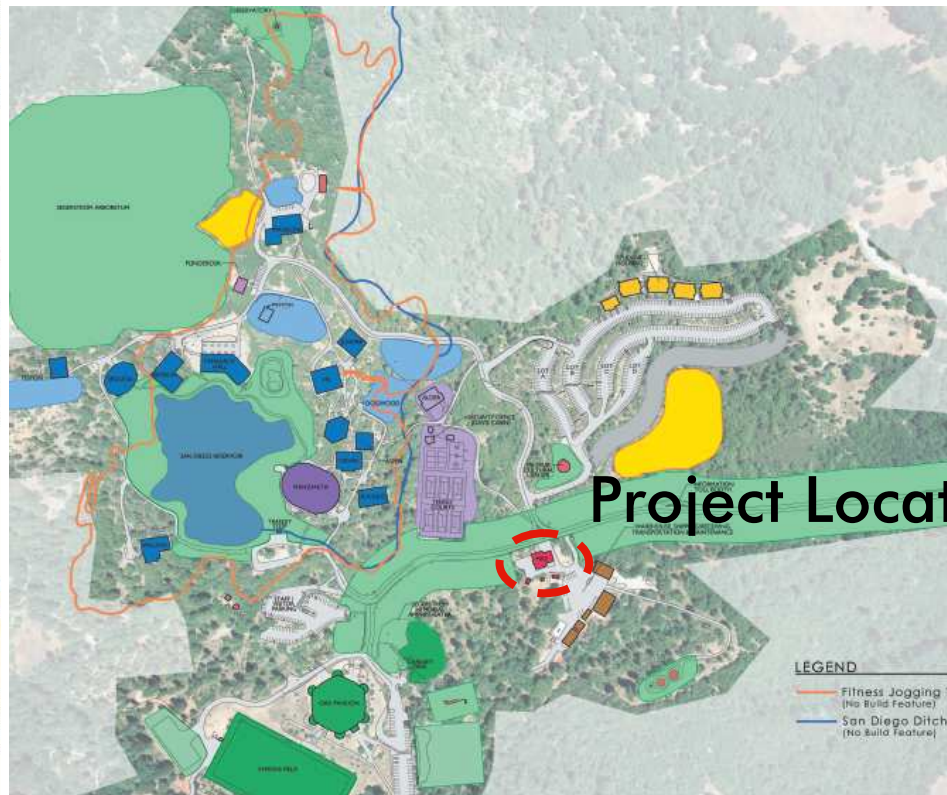
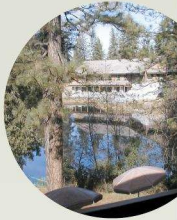
- *Preston Birdwell (CC)*
- *Gary Mendenhall (CC)*
- *Greg Elam (CC)*
- *Joseph Doherty (CC)*
- *Craig Konklin (Cal Fire)*
- *Barry Rudolph (Cal Fire)*
- *Steve Herzog (Cal Fire)*
- *Jim Toy (Cal Fire)*



Yosemite Community College District

# Public Safety Building

- Campus Master Plan



CAMPUS MASTER PLAN

Campus Master Plan

page 3





Yosemite Community  
College District

# Public Safety Building

- Site Plan

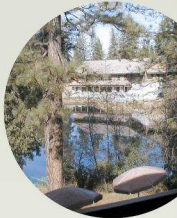
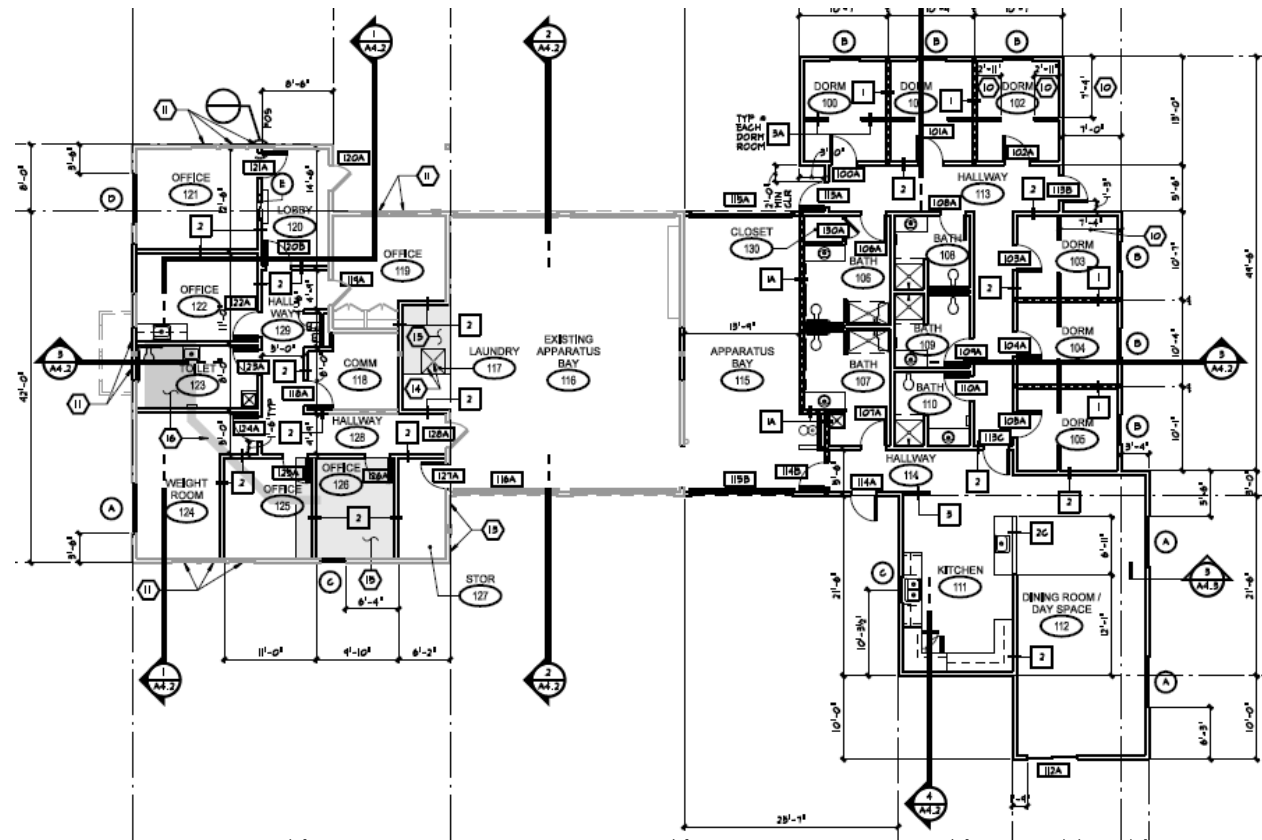




Yosemite Community  
College District

# Public Safety Building

- Floor Plan





Yosemite Community  
College District

# Public Safety Building

- Rendering

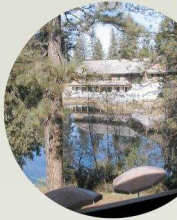






Yosemite Community  
College District

# Public Safety Building



- *Currently working on bid marketing*
- *Project will bid for next month*
- **Ground Breaking to be scheduled by the college and district**

# Question and Answer

January 11, 2008

Building High Quality Facilities For

**E X C E L L E N C E**  
I N E D U C A T I O N



Yosemite Community  
College District

