



Measure E Bond Program COLUMBIA COLLEGE CAMPUS *CONSTRUCTION UPDATE*



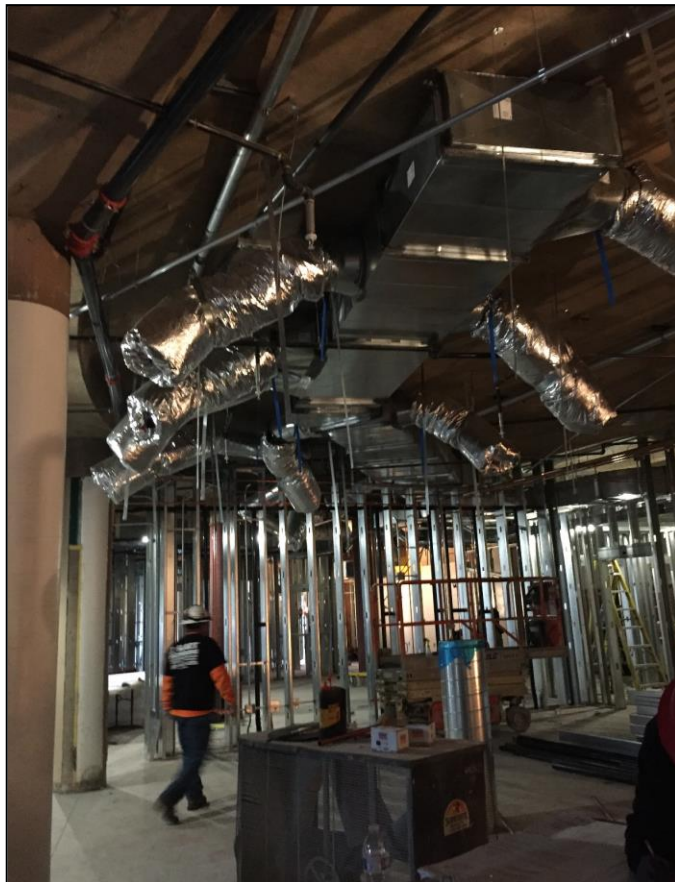
UPDATES & ACTIVITIES THAT MAY IMPACT CAMPUS OPERATION

Week of January 30, 2017

Lower Manzanita Renovation (Alterations to Lower Manzanita & Pinyon Project)

Work this week: Installation of Mechanical, Electrical and Plumbing continue at Lower Manzanita – Noises will consist of cutting saws and drilling into the upper concrete deck.

Access:	Moderate Impact due to construction workers
Noise:	High Impact - from 7:00 AM to 3:00PM daily.
Parking:	Low Impact - All parking lots are open.
Dust:	Low Impact – None anticipated
Odors:	Low Impact – None anticipated
Utilities:	Low impact – No interruptions of existing utilities is anticipated.





Pinyon Building Renovation (Alterations to Lower Manzanita & Pinyon Project)

Work this week: Pinyon work will consist of interior finishes including T-bar ceiling and light fixtures.

Access: Moderate Impact due to construction trucks at the site
Noise: Low Impact - from 7:00 AM to 3:00PM daily.
Parking: Low Impact - All parking lots are open.
Dust: Low Impact - None anticipated
Odors: Low Impact - None anticipated
Utilities: Low impact - No interruptions of existing utilities is anticipated.



If there are any questions or concerns please contact Kitchell CEM, Measure E Bond Construction Manager, located at 11600 Columbia College Drive, Sonora, CA 95370 Tel: (209)588-5030 E-mail: rmartin@kitchell.com.

