



Measure E Bond Program COLUMBIA COLLEGE CAMPUS *CONSTRUCTION UPDATE*



UPDATES & ACTIVITIES THAT MAY IMPACT CAMPUS OPERATION

Week of September 26, 2016

Alterations to Lower Manzanita & Pinyon

Work this week: Demolition of existing interior finishes, concrete, framing, equipment, plumbing, electrical and HVAC will begin this week on both buildings.

Access: Minor impact due construction vehicles near the project sites.

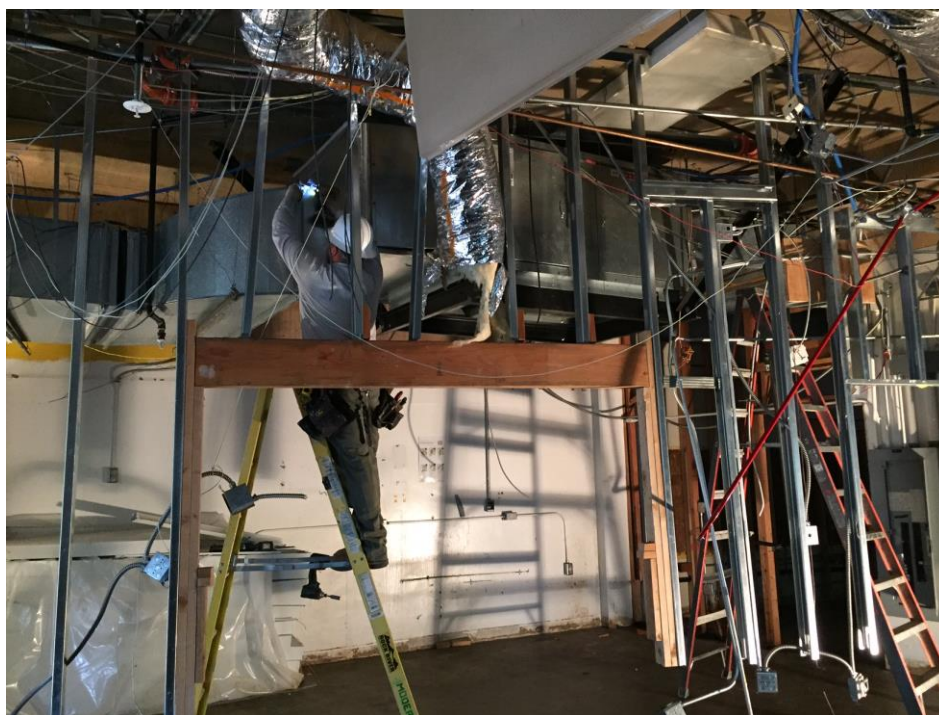
Noise: Extreme impact !! Extreme noise will occur often on the Lower Manzanita building from 6:00 AM to 3:00PM daily!!

Parking: Low Impact - All parking lots are open.

Dust: High Impact - Dust will be present but will be mitigated with barriers and water as much as possible.

Odors: Moderate impact due to removal of existing materials

Utilities: Low impact – No interruptions of existing utilities is anticipated



If there are any questions or concerns please contact Kitchell CEM, Measure E Bond Construction Manager, located at 11600 Columbia College Drive, Sonora, CA 95370 Tel: (209)588-5030 E-mail: rmartin@kitchell.com.

