



Measure E Bond Program COLUMBIA COLLEGE CAMPUS *CONSTRUCTION UPDATE*

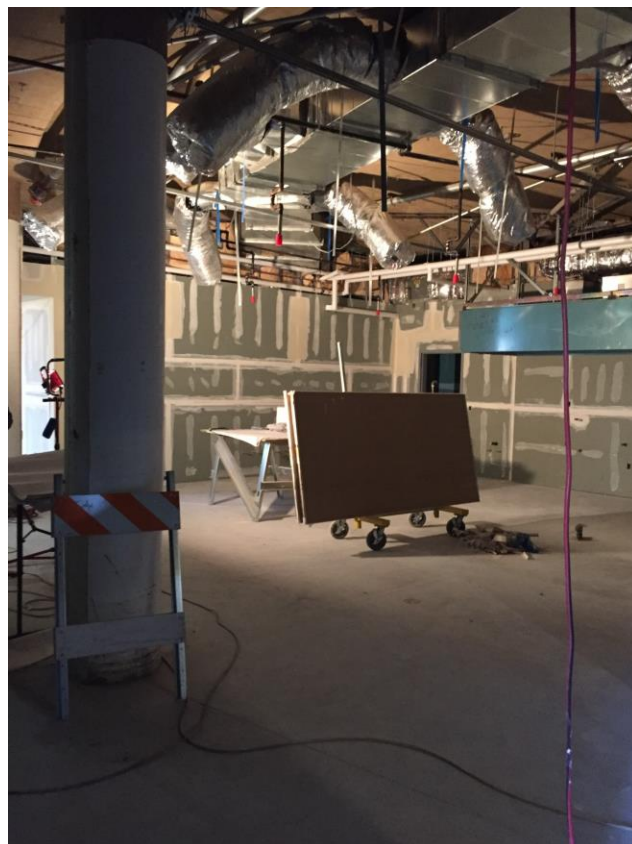


UPDATES & ACTIVITIES THAT MAY IMPACT CAMPUS OPERATION *Week of March 27, 2017*

Lower Manzanita Renovation (Alterations to Lower Manzanita & Pinyon Project)

Work this week: Installation of electrical, metal stud soffits, and drywall will continue at Lower Manzanita. Noise will consist of cutting saws and drilling into the upper concrete deck.

Access:	Moderate impact due to construction workers and equipment accessing the work area.
Noise:	High impact - from 7:00 AM to 3:00PM daily.
Parking:	Moderate impact due to deliveries - All parking lots are open.
Dust:	Low impact - None anticipated.
Odors:	Low impact - None anticipated.
Utilities:	Low impact - No interruptions of existing utilities is anticipated.



**Pinyon Building Renovation
(Alterations to Lower Manzanita & Pinyon Project)**

Work this week: Pinyon work will consist of interior final clean and punch list repairs.

Access: Moderate impact due to construction trucks at the site.
Noise: Moderate impact - from 7:00AM to 3:00PM daily.
Parking: Moderate impact - Tractor work and trucks are in the area.
Dust: Low impact - None anticipated.
Odors: Low impact - None anticipated.
Utilities: Low impact - No interruptions of existing utilities is anticipated.



If there are any questions or concerns please contact Kitchell CEM, Measure E Bond Construction Manager, located at 11600 Columbia College Drive, Sonora, CA 95370 Tel: (209)588-5030 E-mail: rmartin@kitchell.com.