



Measure E Bond Program COLUMBIA COLLEGE CAMPUS CONSTRUCTION UPDATE

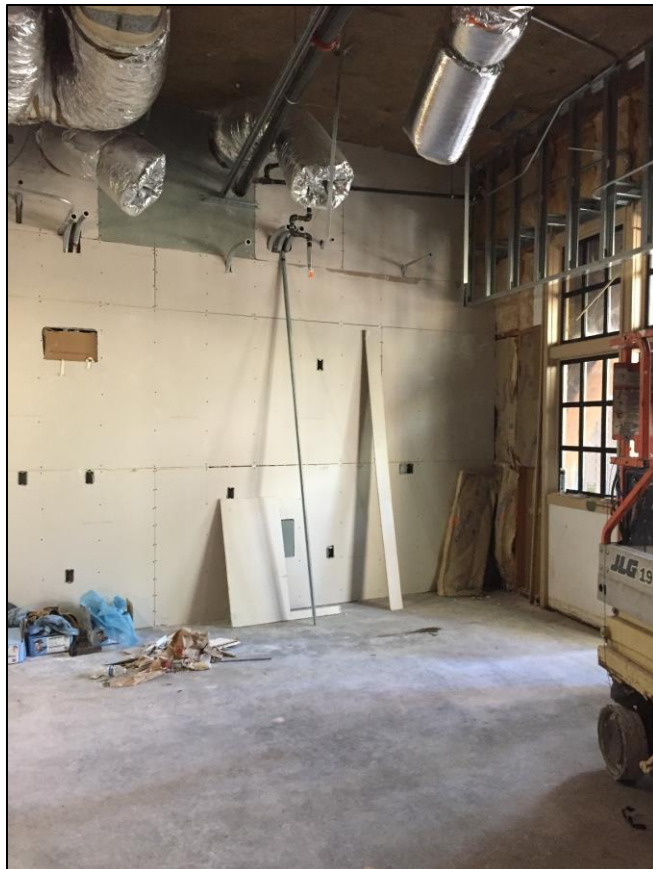


UPDATES & ACTIVITIES THAT MAY IMPACT CAMPUS OPERATION *Week of March 20, 2017*

Lower Manzanita Renovation (Alterations to Lower Manzanita & Pinyon Project)

Work this week: Contractor will be working on installation of electrical equipment, metal stud soffits, and drywall. Noise will consist of saw cutting and drilling into the upper concrete deck.

Access: Moderate impact due to construction workers and equipment accessing the work area.
Noise: High impact - from 7:00 AM to 3:00PM daily.
Parking: Moderate impact due to deliveries - All parking lots are open.
Dust: Low impact - None anticipated.
Odors: Low impact - None anticipated.
Utilities: Low impact - No interruptions of existing utilities is anticipated.





**Pinyon Building Renovation
(Alterations to Lower Manzanita & Pinyon Project)**

Work this week: Contractor will be working on interior final cleaning and punch list repairs.

Access: Moderate impact due to construction trucks at the site.
Noise: Moderate impact - from 7:00 AM to 3:00PM daily.
Parking: Moderate impact – tractor work and trucks in the area.
Dust: Low impact – None anticipated.
Odors: Low impact – None anticipated.
Utilities: Low impact – No interruptions of existing utilities is anticipated.



For any questions or concerns on Measure E Bond projects please contact Construction Manager Kitchell CEM, located at 11600 Columbia College Drive. Sonora. CA 95370 Tel: (209)588-5030 E-mail: rmartin@kitchell.com.

