



Measure E Bond Program COLUMBIA COLLEGE CAMPUS *CONSTRUCTION UPDATE*



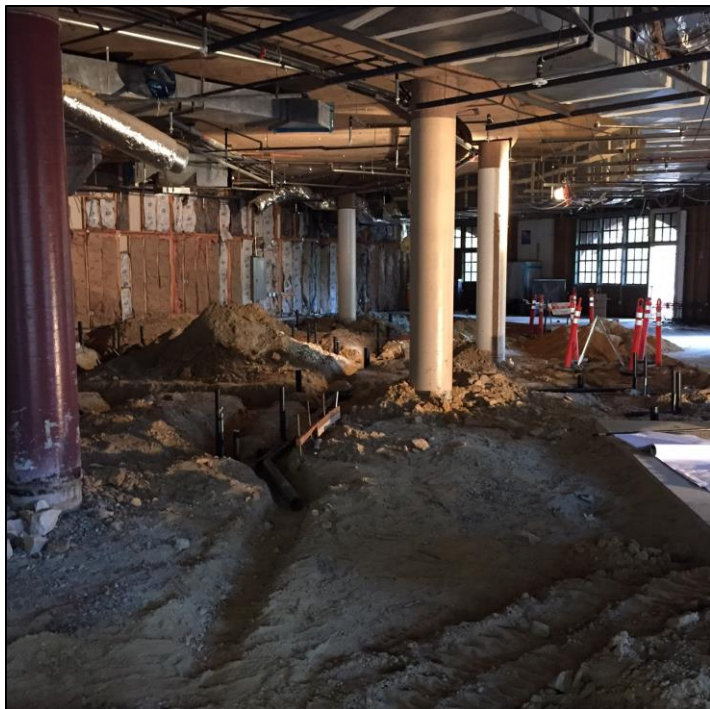
UPDATES & ACTIVITIES THAT MAY IMPACT CAMPUS OPERATION

Week of October 31, 2016

Lower Manzanita Renovation (Alterations to Lower Manzanita & Pinyon Project)

Work this week: Rough underground plumbing and structural work will continue this week in Lower Manzanita.

Access:	Minor impact due construction vehicles near the project sites.
Noise:	Moderate Impact - from 6:00 AM to 3:00PM daily.
Parking:	Low Impact - All parking lots are open.
Dust:	Low Impact.
Odors:	Moderate impact - Construction materials.
Utilities:	Low impact – No interruptions of existing utilities is anticipated.





Pinyon Building Renovation
(Alterations to Lower Manzanita & Pinyon Project)

Work this week: Pinyon will continue with rough installations of plumbing and electrical this week with HVAC starting soon.

Access: Minor impact due construction vehicles near the project sites.
Noise: Moderate Impact - from 6:00 AM to 3:00PM daily.
Parking: Low Impact - All parking lots are open.
Dust: Low Impact.
Odors: Moderate impact - Construction materials.
Utilities: Low impact – No interruptions of existing utilities is anticipated.



If there are any questions or concerns please contact Kitchell CEM, Measure E Bond Construction Manager, located at 11600 Columbia College Drive, Sonora, CA 95370 Tel: (209)588-5030 E-mail: rmartin@kitchell.com.

