



## Measure E Bond Program COLUMBIA COLLEGE CAMPUS CONSTRUCTION UPDATE



### UPDATES & ACTIVITIES THAT MAY IMPACT CAMPUS OPERATION

*Week of October 17, 2016*

#### Lower Manzanita Renovation (Alterations to Lower Manzanita & Pinyon Project)

**Work this week:** Rough grading and plumbing layout and trenching will continue this week on Lower Manzanita.

<b>Access:</b>	Minor impact due construction vehicles near the project sites.
<b>Noise:</b>	Extreme noise may occur often on the Lower Manzanita building from 6:00 AM to 3:00PM daily!!
<b>Parking:</b>	Low Impact - All parking lots are open.
<b>Dust:</b>	High Impact - Dust will be present but will be mitigated with barriers and water as much as possible.
<b>Odors:</b>	Moderate impact due to removal of existing materials.
<b>Utilities:</b>	Low impact – No interruptions of existing utilities is anticipated.

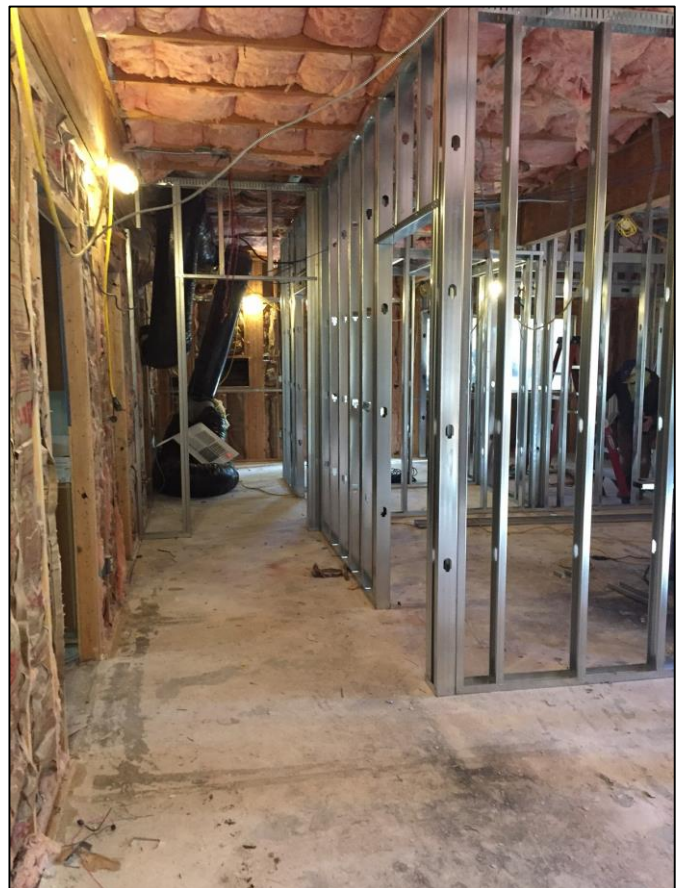




### **Pinyon Building Renovation (Alterations to Lower Manzanita & Pinyon Project)**

**Work this week:** Pinyon will continue with rough installations of plumbing and electrical this week.

**Access:** Minor impact due construction vehicles near the project sites.  
**Noise:** Minor impact.  
**Parking:** Minor Impact - All parking lots are open.  
**Dust:** Low Impact.  
**Odors:** Low Impact.  
**Utilities:** Low impact – No interruptions of existing utilities is anticipated.



If there are any questions or concerns please contact Kitchell CEM, Measure E Bond Construction Manager, located at 11600 Columbia College Drive, Sonora, CA 95370 Tel: (209)588-5030 E-mail: [rmartin@kitchell.com](mailto:rmartin@kitchell.com).

