



Measure E Bond Program COLUMBIA COLLEGE CAMPUS CONSTRUCTION UPDATE



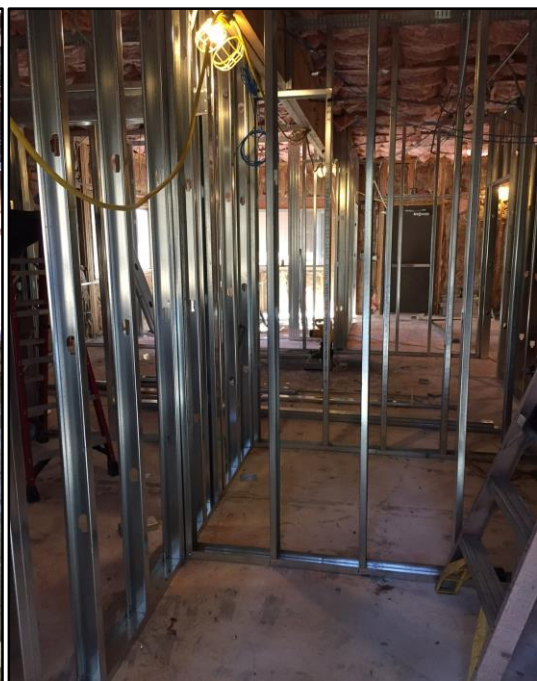
UPDATES & ACTIVITIES THAT MAY IMPACT CAMPUS OPERATION

Week of October 10, 2016

Alterations to Lower Manzanita & Pinyon

Work this week: Demolition of concrete will conclude this week on Lower Manzanita. Pinyon will continue with framing of steel studs and will start working on plumbing this week.

- Access:** Minor impact due construction vehicles near the project sites.
Noise: Extreme noise will occur often on the Lower Manzanita building from 6:00 AM to 3:00PM daily!!
Parking: All parking lots are open.
Dust: Dust will be present but will be mitigated with barriers and water as much as possible.
Odors: Moderate impact due to removal of existing materials.
Utilities: No interruptions of existing utilities is anticipated.



If there are any questions or concerns please contact Kitchell CEM, Measure E Bond Construction Manager, located at 11600 Columbia College Drive, Sonoma, CA 95370 Tel: (209)588-5030 E-mail: rmartin@kitchell.com.

