



Measure E Bond Program COLUMBIA COLLEGE CAMPUS CONSTRUCTION UPDATE

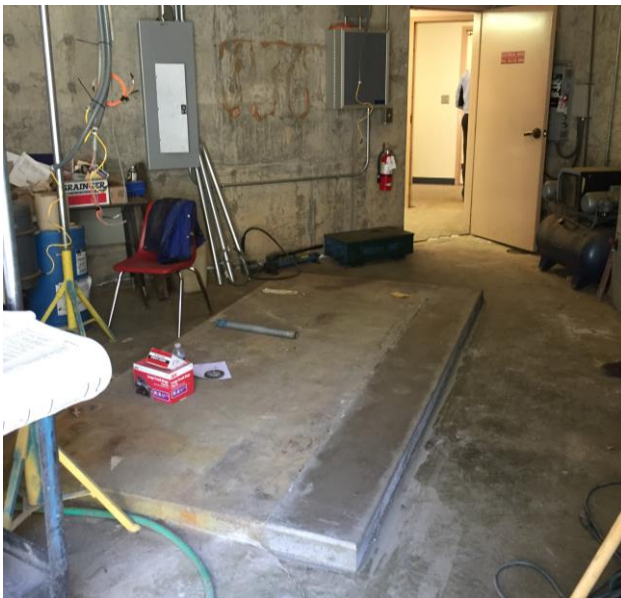


UPDATES & ACTIVITIES THAT MAY IMPACT CAMPUS OPERATION *Week of July 25, 2016*

Scheduled Maintenance (Fund 41) – Oak Pavilion Chiller Replacement

Work this week: Work continues with removal of old equipment and preparation for the new HVAC Equipment inside the Oak Pavilion. There is no air conditioning in the building at this time.

Access: Minor impact due construction vehicles at the south entry.
Noise: Moderate to extreme noise could occur occasionally during working hours.
Parking: Low impact. All parking lots are open.
Dust: Low impact.
Odors: Minor impact.
Utilities: Minor impact. Power to the utility closets has been temporarily disconnected.



If there are any questions or concerns please contact Kitchell CEM, Measure E Bond Construction Manager, located at 11600 Columbia College Drive, Sonora, CA 95370 Tel: (209)588-5030 E-mail: rmartin@kitchell.com.

