



Measure E Bond Program COLUMBIA COLLEGE CAMPUS CONSTRUCTION UPDATE



UPDATES & ACTIVITIES THAT MAY IMPACT CAMPUS OPERATION

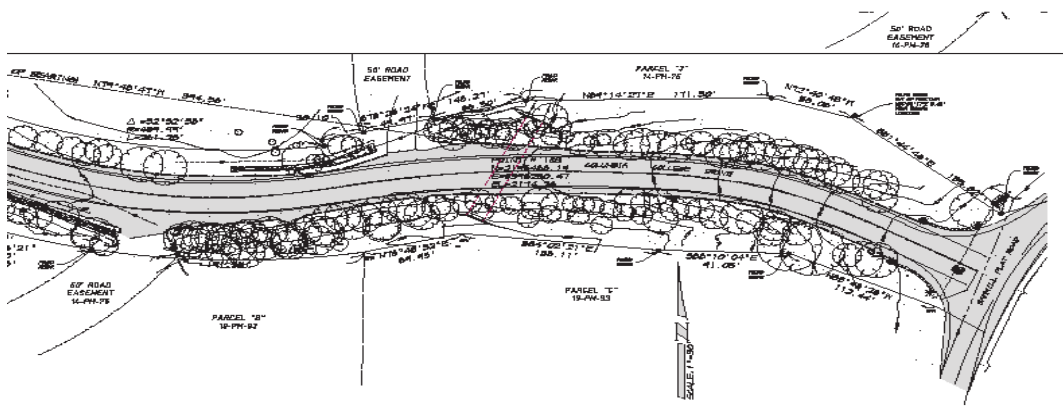
Week of July 4, 2016

Repairs to Columbia College Drive

Work this week: Repairs of existing asphalt concrete and the addition of rock along the edges of the road will occur this week.

Access:	Moderate delays may occur. Caution should be taken when accessing the college entry road due to heavy equipment. Minor delays will occur due to one lane traffic control. Flagmen will be present.
Noise:	Moderate to extreme noise could occur occasionally during working hours.
Parking:	Low impact. All parking lots are open
Dust:	Moderate Impact due to dumping of rock and tractor work.
Odors:	Low Impact.
Utilities:	None anticipated.

COLUMBIA COLLEGE DRIVE – ENTRANCE ROAD



If there are any questions or concerns contact Kitchell CEM, Measure E Bond Construction Manager, located at
11600 Columbia College Drive Dr., Sonoma CA 95370 Tel: 209-588-5030 E-mail rmartin@kitchell.com

