



Measure E Bond Program COLUMBIA COLLEGE CAMPUS CONSTRUCTION UPDATE



UPDATES & ACTIVITIES THAT MAY IMPACT CAMPUS OPERATION *Week of October 6, 2014*

Manzanita Building Modernization

Work this week: This week will encounter heavy traffic flow in the area as we will have deliveries of mechanical units. We will also be pouring concrete in the basement of the building. Site work was quiet the prior week but will commence again this week. Mechanical, electrical & framing work will continue to truck along.

Access: Caution is advised when entering the site due to tripping hazards. Heavy traffic flow this week due to site work occurring again.

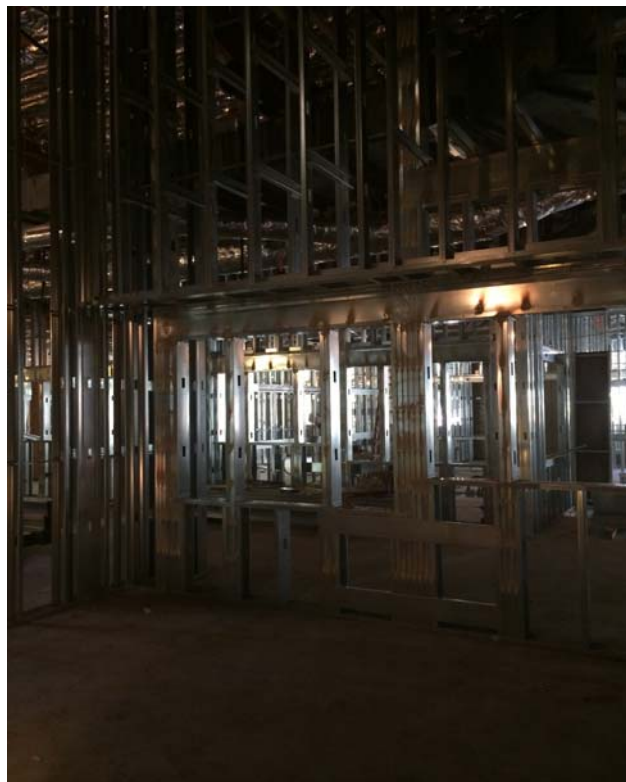
Noise: Moderate to extreme noise could occur occasionally due to site related activities.

Parking: Medium impact.

Dust: Moderate impact due to site related construction activities.

Odors: Low Impact

Utilities: None anticipated.



If there are any questions or concerns contact Kitchell CEM, Measure E Bond Construction Manager, located at
11600 Columbia College Drive Dr., Sonoma CA 95370 Tel: 209-575-7927 Email rmartin@kitchell.com

