



## Measure E Bond Program COLUMBIA COLLEGE CAMPUS CONSTRUCTION UPDATE



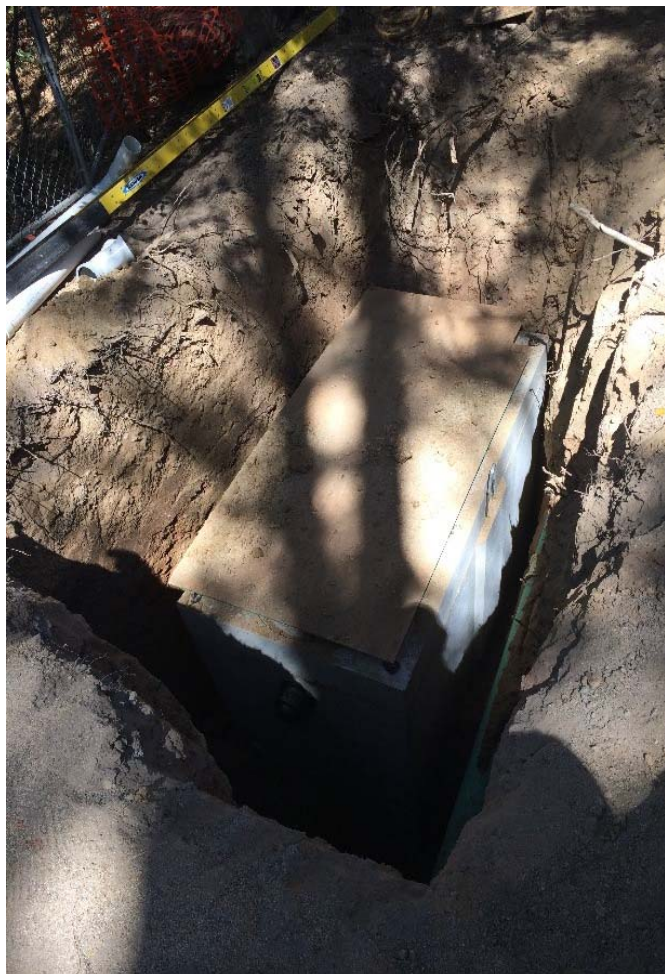
### UPDATES & ACTIVITIES THAT MAY IMPACT CAMPUS OPERATION

*Week of August 18, 2014*

#### Manzanita Building Modernization

**Work this week:** As the prior weeks, work for electrical, mechanical & some plumbing will take place this week. We will keep the framing moving along with work on the new roof. In regards to the site work, that will also continue as we will begin to install gutters & insulate hydronic lines.

**Access:** Caution is advised when entering the site due to tripping hazards.  
**Noise:** Moderate to extreme noise could occur occasionally due to site related activities.  
**Parking:** Low impact.  
**Dust:** Moderate impact due to site related construction activities.  
**Odors:** Low Impact  
**Utilities:** None anticipated.

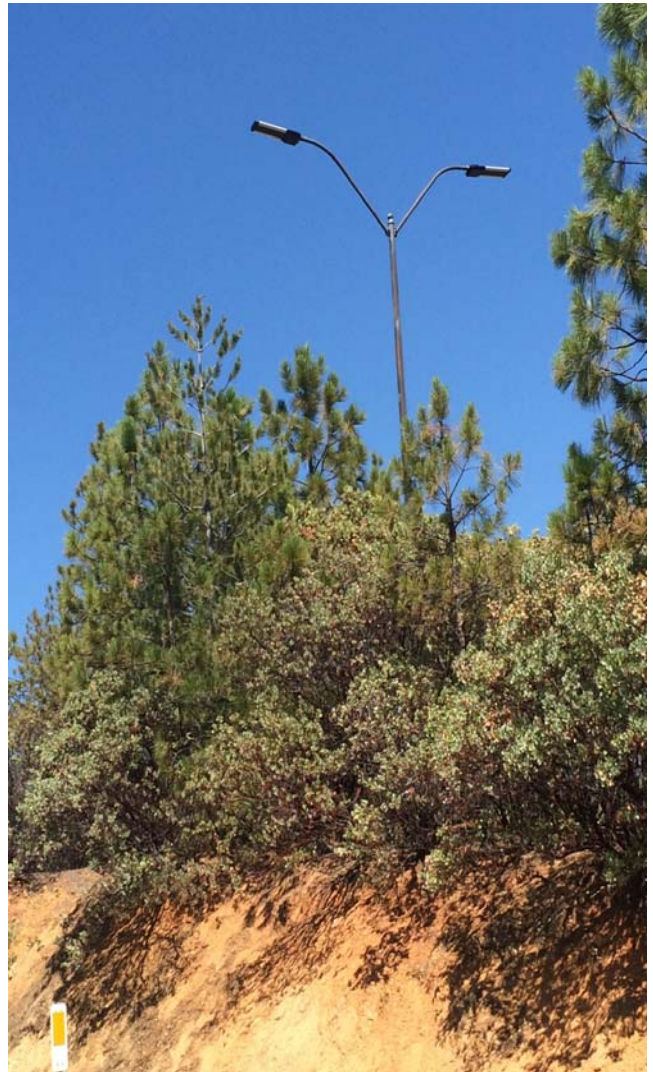




## Roadways Phase II

**Work this week:** New light fixtures have been installed. For the coming week we will be installing the parking ticket machines as well as the emergency call boxes.

**Access:** Caution is advised when entering the site due to worker/equipment exposure.  
**Noise:** Moderate to extreme noise could occur occasionally due to site related activities.  
**Parking:** Parking will not be affected as all roads in the parking lot are now open.  
**Dust:** Moderate impact due to site related construction activities.  
**Odors:** Low Impact  
**Utilities:** None anticipated.



If there are any questions or concerns contact Kitchell CEM, Measure E Bond Construction Manager, located at 11600 Columbia College Drive Dr., Sonora CA 95370 Tel: 209-575-7927 Email [rmartin@kitchell.com](mailto:rmartin@kitchell.com)

