



Measure E Bond Program COLUMBIA COLLEGE CAMPUS *CONSTRUCTION UPDATE*



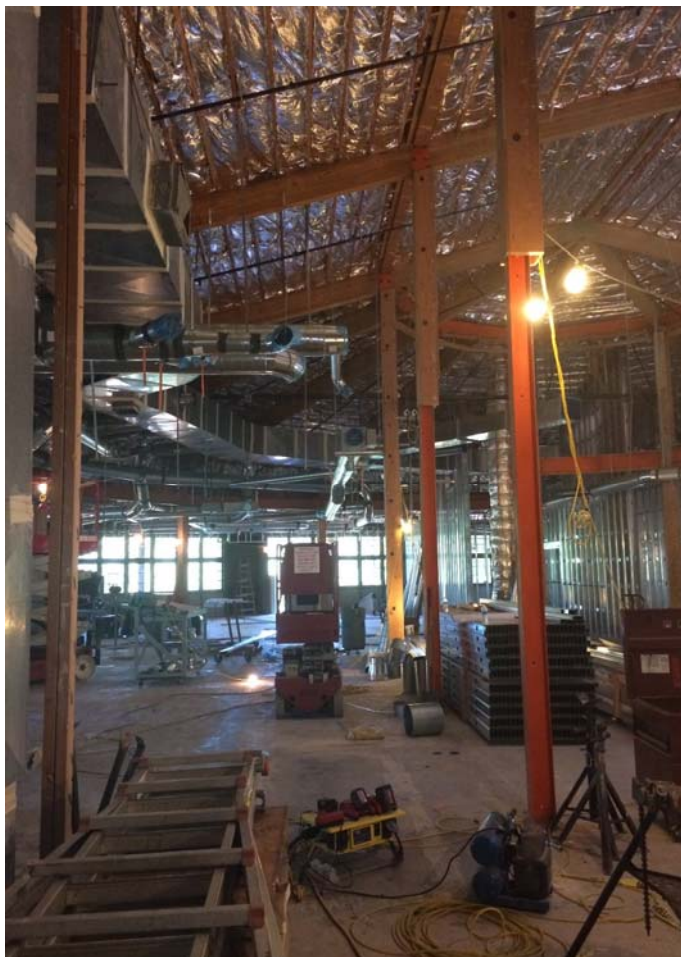
UPDATES & ACTIVITIES THAT MAY IMPACT CAMPUS OPERATION

Week of July 28, 2014

Manzanita Building Modernization

Work this week: This coming week, work shall continue for electrical & mechanical. The framing of walls & windows keeps on going with continued site work outside of the Manzanita building.

Access:	Caution is advised when entering the site due to tripping hazards.
Noise:	Moderate to extreme noise could occur occasionally due to site related activities.
Parking:	Low impact.
Dust:	Moderate impact due to site related construction activities.
Odors:	Low Impact
Utilities:	None anticipated.



Roadways Phase II

Work this week: This coming week we will begin the striping process on the roadways. During this time we will also have electrical work going on for the site lighting.

Access: Caution is advised when entering the site due to traffic detours & worker/equipment exposure.

Noise: Moderate to extreme noise could occur occasionally due to site related activities.

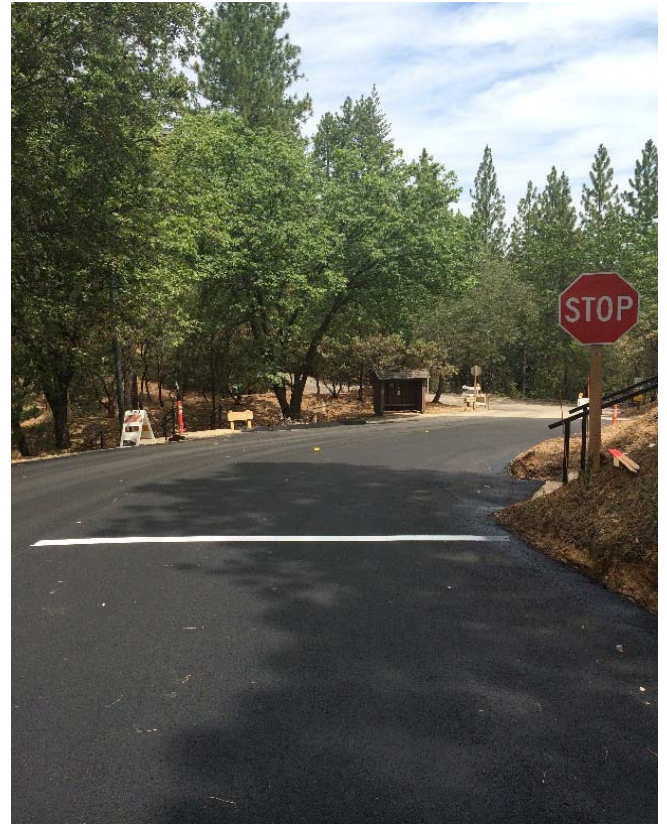
Parking: High impact; road closures & detours have been implemented. Bulletins of these closures/detours have been delivered to the District for distribution.

Dust: Moderate impact due to site related construction activities.

Odors: Low Impact

Utilities: None anticipated.





If there are any questions or concerns contact Kitchell CEM, Measure E Bond Construction Manager, located at
11600 Columbia College Drive Dr., Sonora CA 95370 Tel: 209-575-7927 Email rmartin@kitchell.com

