



Measure E Bond Program COLUMBIA COLLEGE CAMPUS *CONSTRUCTION UPDATE*



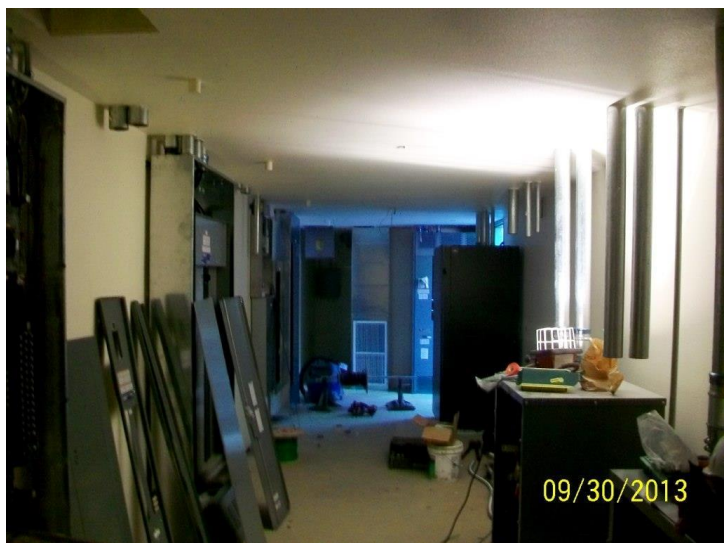
UPDATES & ACTIVITIES THAT MAY IMPACT CAMPUS OPERATION

Week of October 7, 2013

Secondary Data Center

Work this week: MEP equipment installation inside the building, install doors and door hardware, epoxy Data Room floor under raised flooring and seal UPS Room floor.

Access:	Caution is advised at tennis courts and student trail south of building.
Noise:	Moderate noise could occur occasionally due to site related activities.
Parking:	Moderate impact to parking at tennis courts due to contractor's staging of construction materials.
Dust:	Moderate impact due to site related construction activities.
Odors:	Low Impact
Utilities:	No impact to utilities is anticipated.



Sequoia Building Modernization

Work this week: Finish hanging drywall, continue taping and finishing walls, continue roughing in MEP systems, retrofit existing suspended ceiling and install exterior trim.

Access: No impact is anticipated.
Noise: Moderate noise could occur occasionally due to demolition activities.
Parking: No parking along section of north drive isle adjacent to the construction site.
Dust: Moderate noise could occur occasionally due to demolition activities.
Odors: Low Impact.
Utilities: No impact to utilities is anticipated.



~~~~~  
If there are any questions or concerns contact Kitchell CEM, Measure E Bond Construction Manager, located at  
2201 Blue Gum Ave., Modesto CA 95358 Tel: 575-6991 Email [rmartin@kitchell.com](mailto:rmartin@kitchell.com)

