



# Measure E Bond Program MODESTO JUNIOR COLLEGE CAMPUS CONSTRUCTION UPDATE

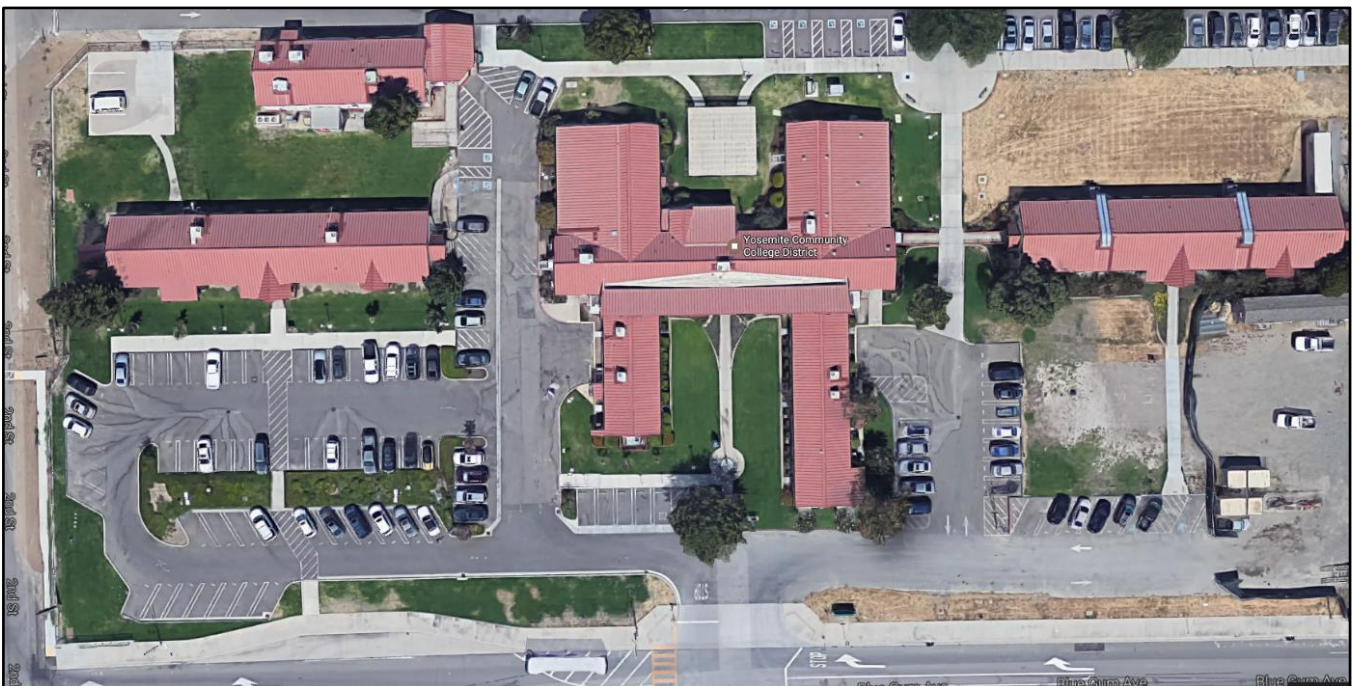


## UPDATES & ACTIVITIES THAT MAY IMPACT CAMPUS OPERATION *Week of June 5, 2017*

### OLD DISTRICT OFFICE BUILDINGS

**Work this week:** Hazmat abatement continues to make progress.

**Access:** None.  
**Noise:** Minimal.  
**Parking:** Staff parking lots will remain open.  
**Utilities:** None.  
**Odors:** None.  
**Dust:** Minimal.



## WEST CAMPUS ROADS PHASE IIB (AREAS 5&6)

**Work this week:** Construction of the new turn around and connection between Student Center Drive and Brink Avenue is in progress. Underground utilities and curb and gutter concrete pour started this week.

**Access:** None.

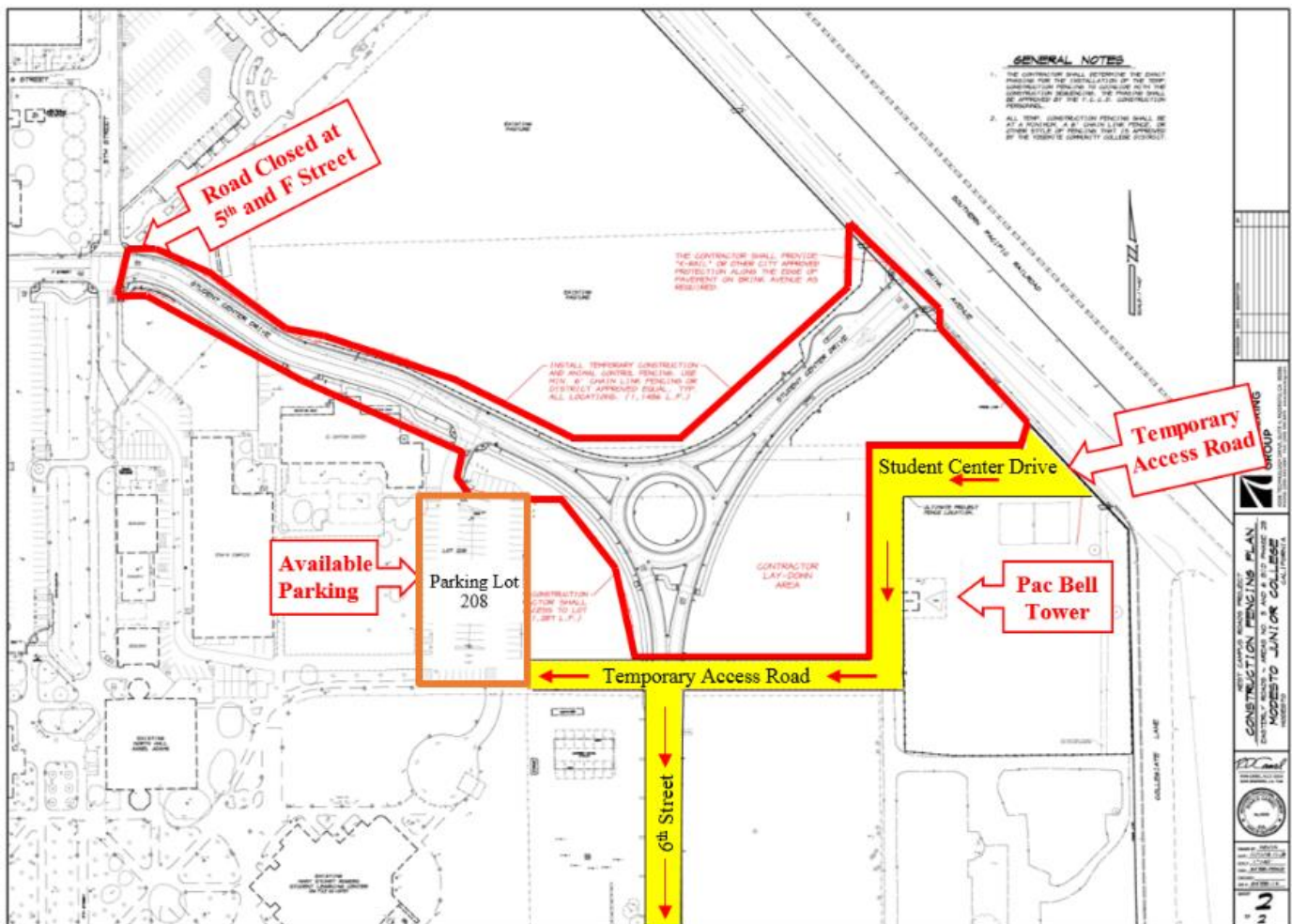
**Noise:** Construction equipment.

**Parking:** Gravel lot will remain closed until August. Parking lot # 208 will remain open. North gate at Agriculture Pavilion will be closed from June 2 to June 23.

**Utilities:** None.

**Odors:** None.

**Dust:** None.



If there are any questions or concerns regarding Measure E Bond projects please contact Kitchell CEM, located at 2201 Blue Gum Ave., Modesto CA 95358 Tel: (209) 575-6991 E-mail: [avalencia@kitchell.com](mailto:avalencia@kitchell.com)