



# Measure E Bond Program MODESTO JUNIOR COLLEGE CAMPUS CONSTRUCTION UPDATE

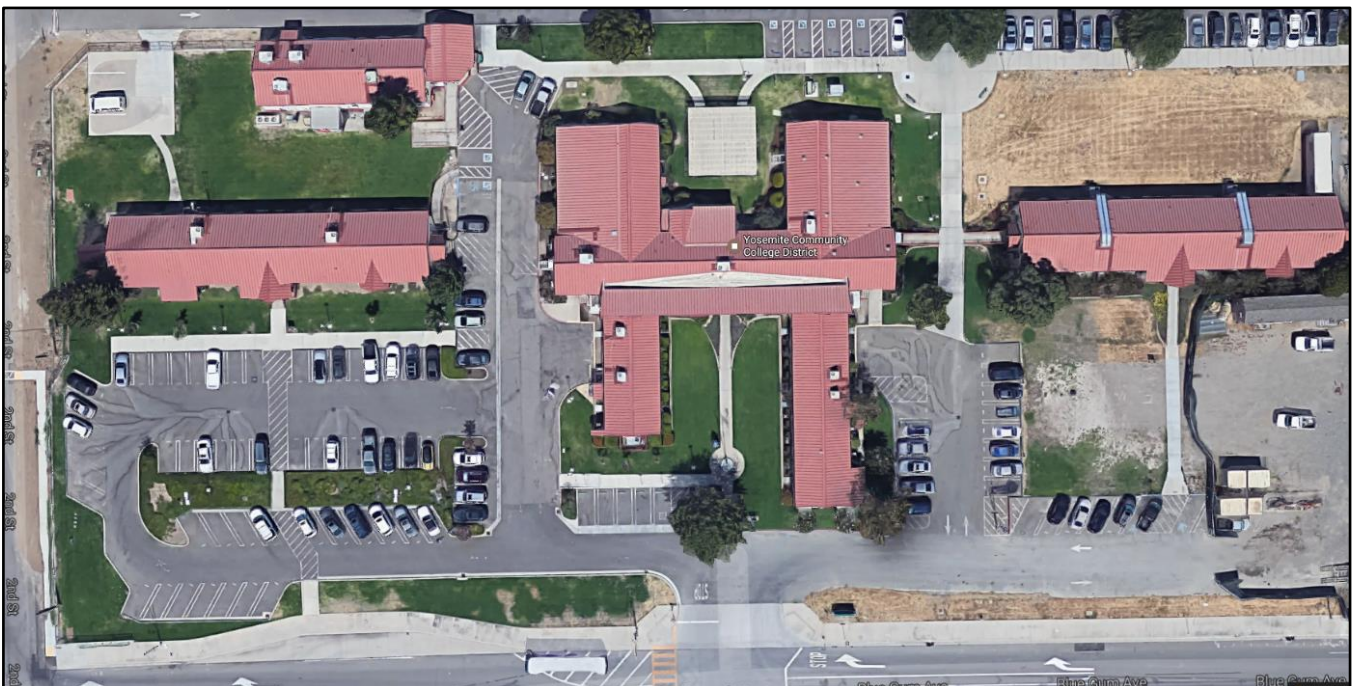


## UPDATES & ACTIVITIES THAT MAY IMPACT CAMPUS OPERATION *Week of May 29, 2017*

### OLD DISTRICT OFFICE BUILDINGS

**Work this week:** Hazmat abatement continues to make progress.

**Access:** None.  
**Noise:** Minimal.  
**Parking:** Staff parking lots will remain open.  
**Utilities:** None.  
**Odors:** None.  
**Dust:** Minimal.





# Measure E Bond Program MODESTO JUNIOR COLLEGE CAMPUS CONSTRUCTION UPDATE Page 2 of 2

## WEST CAMPUS ROADS PHASE IIB (AREAS 5&6)

**Work this week:** Construction of the new turn around and connection between Student Center Drive and Brink Avenue is in progress.

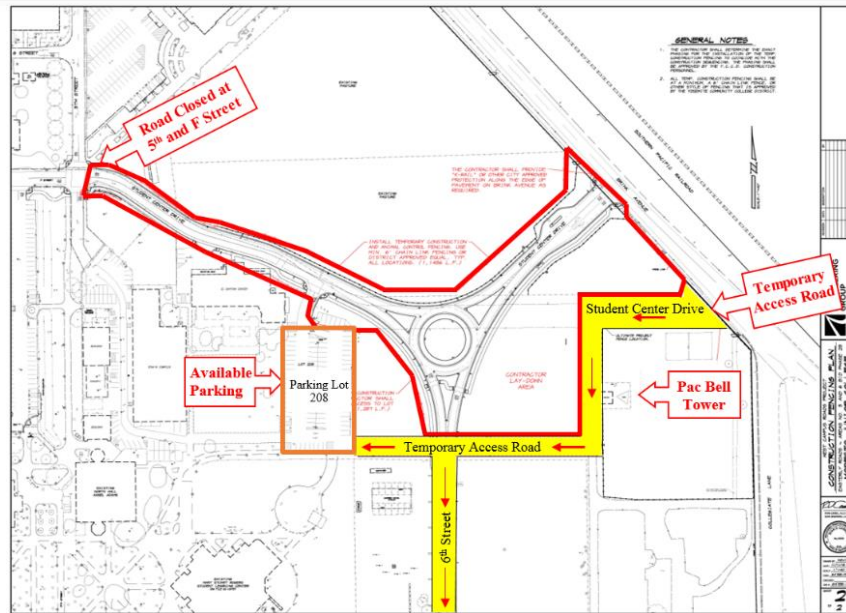
**Access:** None.

**Noise:** Construction equipment.

**Parking:** Gravel lot will remain closed until August. Parking lot # 208 will remain open.

**Utilities:** None.

**Odors:** None.



If there are any questions or concerns regarding Measure E Bond projects please contact Kitchell CEM, located at 2201 Blue Gum Ave., Modesto CA 95358 Tel: (209) 575-6991 E-mail: [avalencia@kitchell.com](mailto:avalencia@kitchell.com)