



Measure E Bond Program MODESTO JUNIOR COLLEGE CAMPUS CONSTRUCTION UPDATE



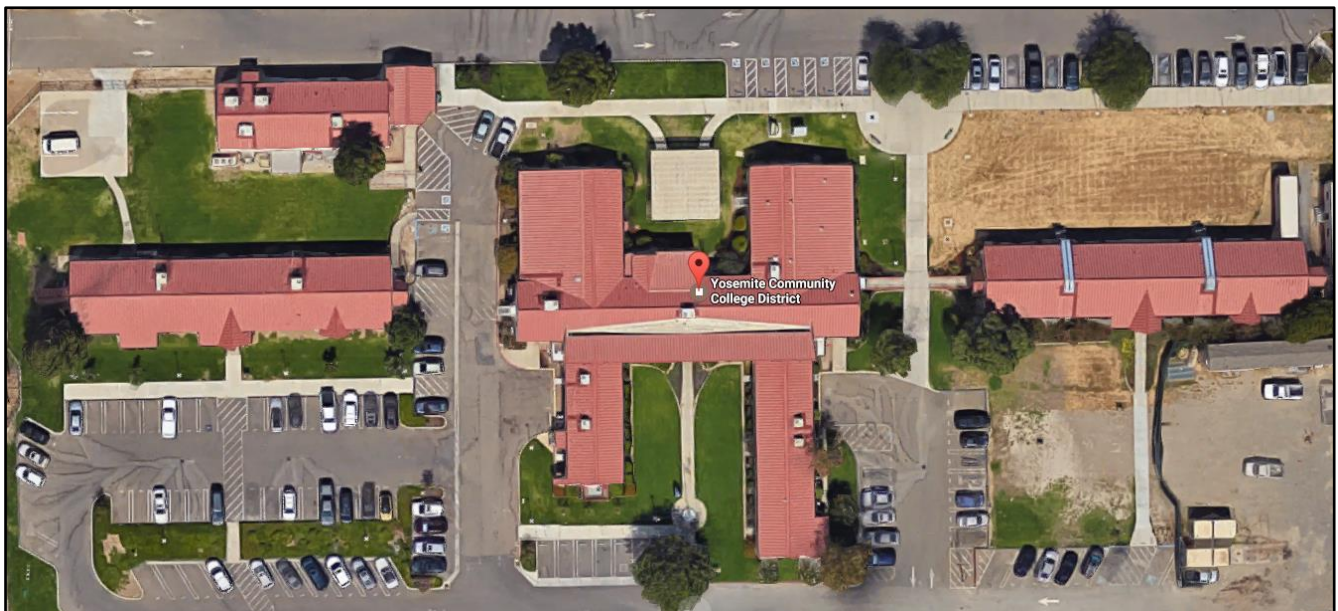
UPDATES & ACTIVITIES THAT MAY IMPACT CAMPUS OPERATION

Week of February 6, 2017

DISTRICT OFFICE BUILDING

Work this week: All central services staff has moved in to the new building. Kitchell is working with the District on liquidating furniture from the old central services buildings in preparation for the demolition of the old buildings.

Access: None.
Noise: None.
Parking: None.
Utilities: None.
Odors: None.
Dust: None.





WEST CAMPUS ROADS PHASE IIA (AREAS 5 & 6)

Work this week: Landscape work continues along with miscellaneous work.

Access: The west loop road is now open.

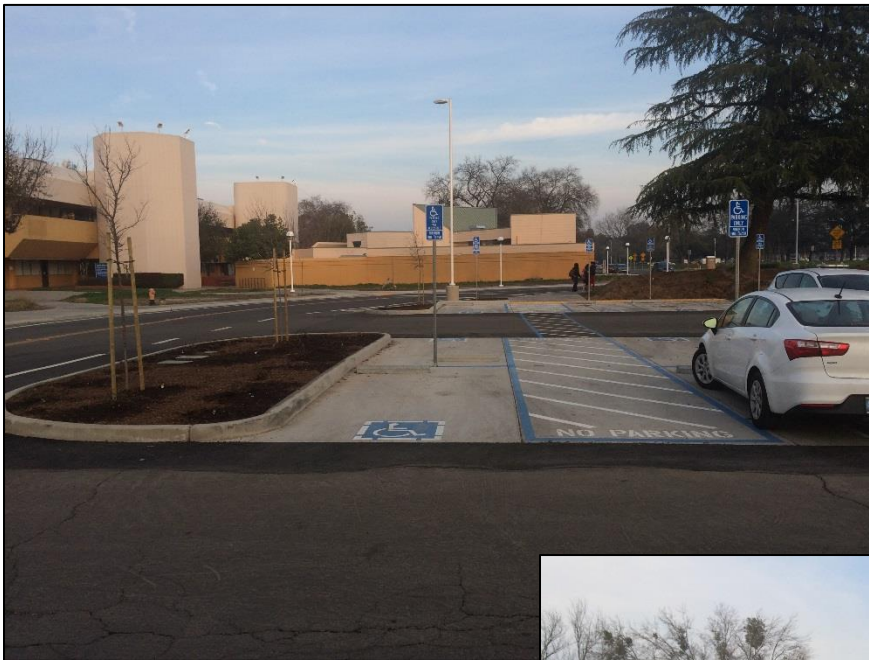
Noise: None.

Parking: All parking lots are open.

Utilities: None.

Odors: None.

Dust: None.





WEST CAMPUS ROADS PHASE IIB (AREAS 5&6)

Work this week: Irrigation line work along Brink Avenue and the pasture to begin.

Access: None.
Noise: None.
Parking: All parking lots are open.
Utilities: None.
Odors: None.
Dust: None.

Roads Open for Beginning of
Spring Term

Entry open

Entry
Open

Open Parking Area/
Alternate Route

Staff Parking Only

Entry
Open

Entry
Open

Entry
Open



If there are any questions or concerns please contact Kitchell CEM, located at
2201 Blue Gum Ave., Modesto CA 95358 Tel: 575-6991 E-mail: avalencia@kitchell.com