



Measure E Bond Program MODESTO JUNIOR COLLEGE CAMPUS CONSTRUCTION UPDATE



UPDATES & ACTIVITIES THAT MAY IMPACT CAMPUS OPERATION

Week of December 26, 2016

DISTRICT OFFICE BUILDING

Work this week: All central services staff has moved in to the new building. Working on liquidation of furniture from old central services building in preparation for the demolition of the old buildings.

Access: None.
Noise: None.
Parking: None.
Utilities: None.
Odors: None.
Dust: None.





WEST CAMPUS ROADS PHASE I (AREAS 3 & 4)

Work this week: Contractor will be working on landscape, irrigation, and punch list items.

Access: Please see map below for campus navigation.
Noise: Low noise due to minor construction work.
Parking: All parking lots are open with the exception of Lot 209 & 211.
Utilities: None anticipated.
Odors: None anticipated.
Dust: Moderate impact due to construction related activities.

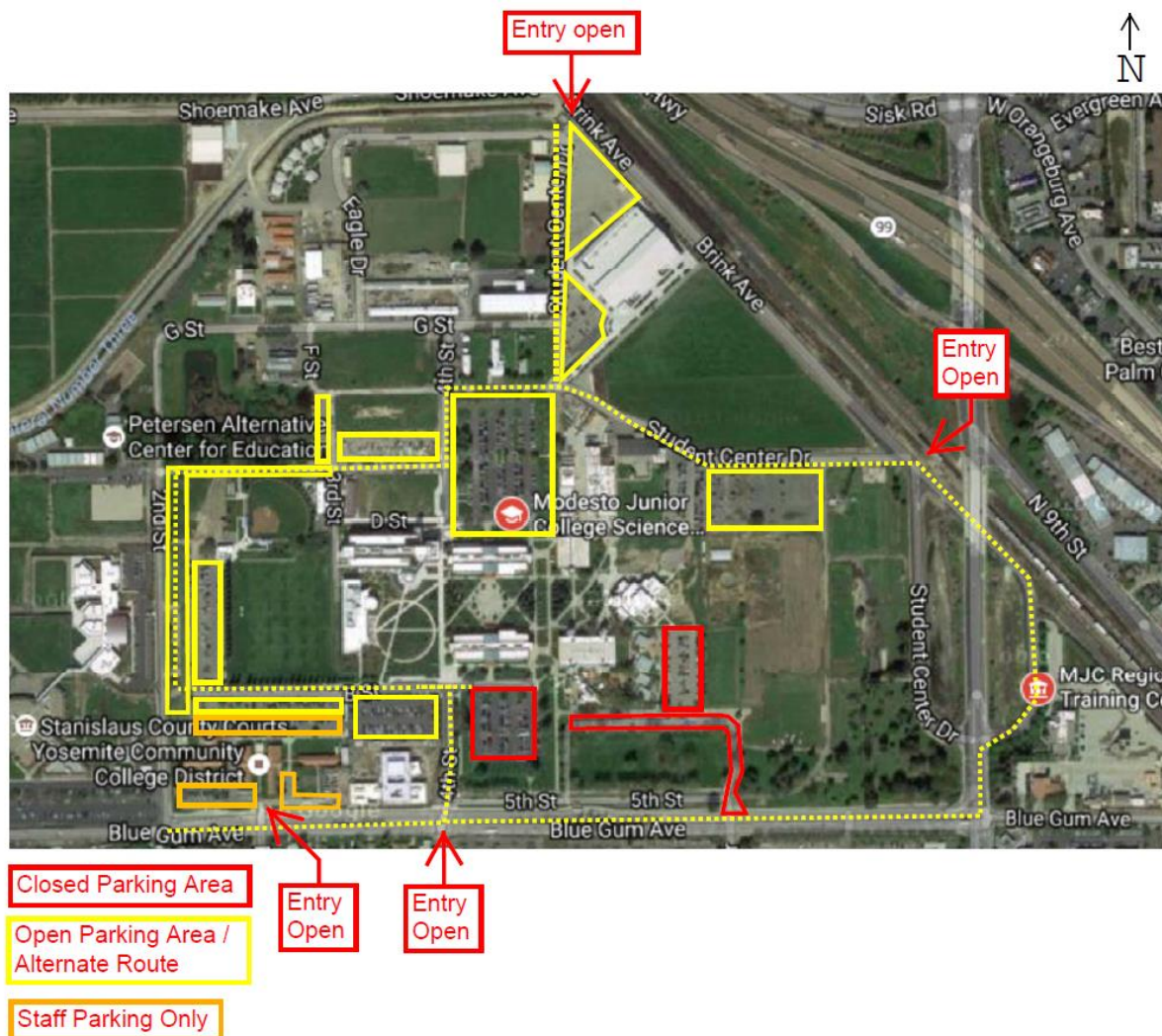




WEST CAMPUS ROADS PHASE IIA (AREA 5 & 6)

Work this week: Landscape work continues along with striping.

Access: The west loop road is now open.
Noise: Low noise due to minor construction work.
Parking: All parking lots are open with the exception of Lot 209 & 211.
Utilities: None anticipated.
Odors: None anticipated.
Dust: Moderate impact due to construction related activities.



If there are any questions or concerns please contact Kitchell CEM, located at
2201 Blue Gum Ave., Modesto CA 95358 Tel: 575-6991 E-mail: avalencia@kitchell.com