



Measure E Bond Program MODESTO JUNIOR COLLEGE CAMPUS CONSTRUCTION UPDATE



UPDATES & ACTIVITIES THAT MAY IMPACT CAMPUS OPERATION

Week of November 14, 2016

DISTRICT OFFICE BUILDING

Work this week: Contractor will continue to work on punch list items this week. All central services staff has moved in to the new building.

Access: None.
Noise: None.
Parking: None.
Utilities: None.
Odors: None.
Dust: None.



OVERALL FURNITURE PLAN

WEST CAMPUS ROADS PHASE I (AREAS 3 & 4)

Work this week: The contractor will continue to work on punch list items.

Access: Please see map below for campus navigation.

Noise: Low noise due to construction.

Parking: All parking lots are open with the exception of Lot 209 & 211.

Utilities: None anticipated.

Odors: None anticipated.

Dust: Moderate impact due to construction related activities.

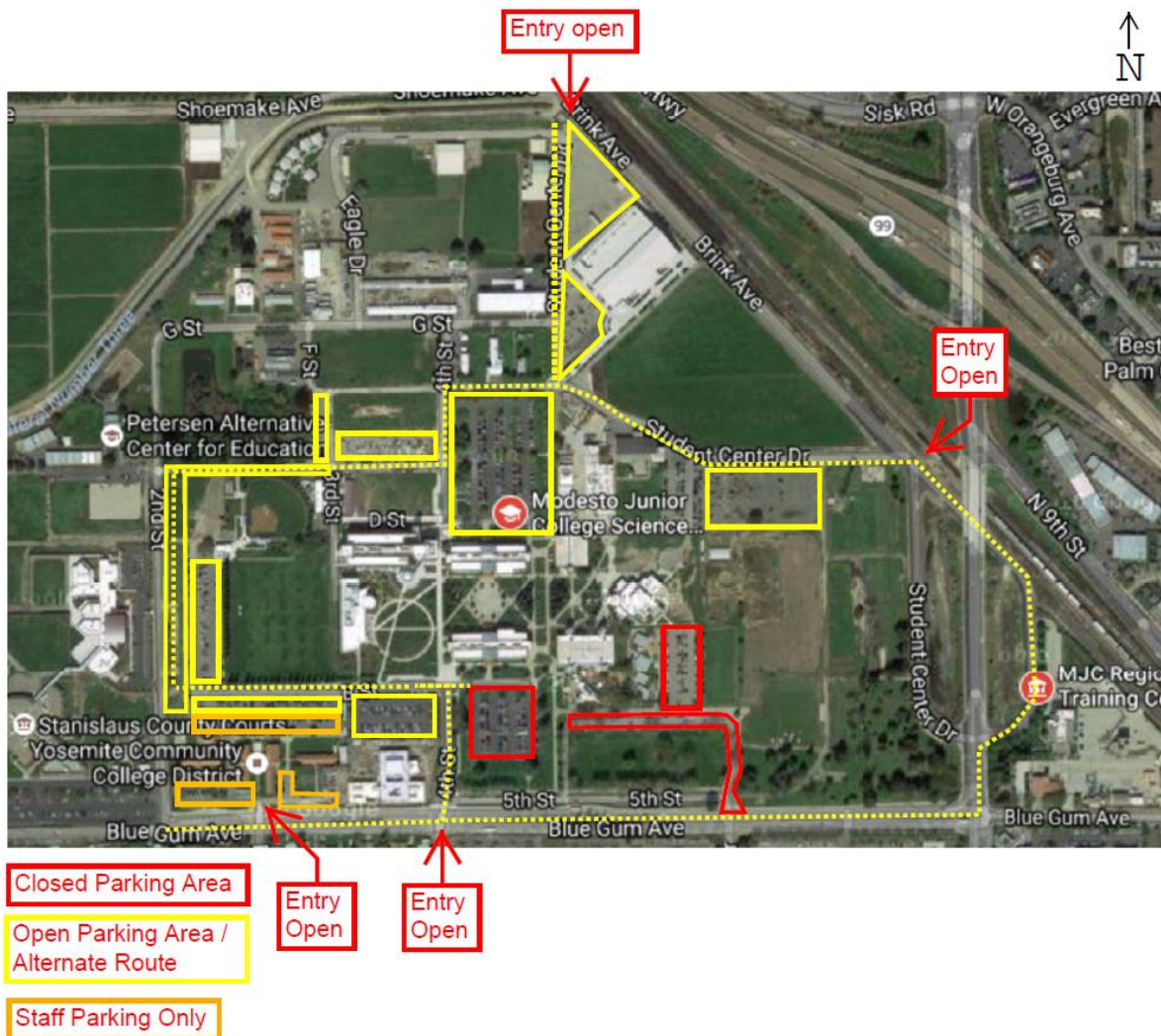




WEST CAMPUS ROADS PHASE IIA (AREA 5)

Work this week: Contractor will begin paving this week followed by utility adjustments. Irrigation work will continue through the week.

- Access:** The west loop road is now open.
Noise: Extreme noise due to heavy construction equipment.
Parking: All parking lots are open with the exception of Lot 209 & 211.
Utilities: None anticipated.
Odors: None anticipated.
Dust: Moderate impact due to construction related activities.



If there are any questions or concerns please contact Kitchell CEM, located at
2201 Blue Gum Ave., Modesto CA 95358 Tel: 575-6991 E-mail: avalencia@kitchell.com