



Measure E Bond Program MODESTO JUNIOR COLLEGE CAMPUS CONSTRUCTION UPDATE



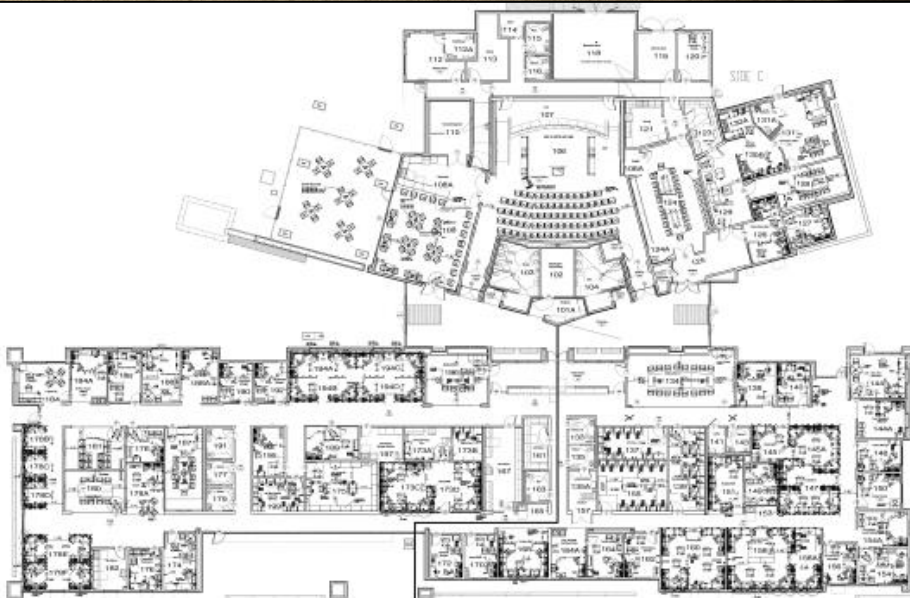
UPDATES & ACTIVITIES THAT MAY IMPACT CAMPUS OPERATION

Week of November 7, 2016

DISTRICT OFFICE BUILDING

Work this week: Contractor will continue to work on punch list items this week. Staff are moving in to the building by department. This week Accounts Payable, Fiscal Services, Payroll, and Accounting will be moving in.

Access: None.
Noise: Moderate due to construction.
Parking: None.
Utilities: None.
Odors: None.
Dust: None.



OVERALL FURNITURE PLAN



Measure E Bond Program MODESTO JUNIOR COLLEGE CAMPUS CONSTRUCTION UPDATE

Page 2 of 3

WEST CAMPUS ROADS PHASE I (AREAS 3 & 4)

Work this week: The contractor will continue to work on irrigation and punch list items.

- Access:** Please see map below for campus navigation.
Noise: Low noise due to construction.
Parking: All parking lots are open with the exception of Lot 209 & 211.
Utilities: None anticipated.
Odors: None anticipated.
Dust: Moderate impact due to construction related activities.

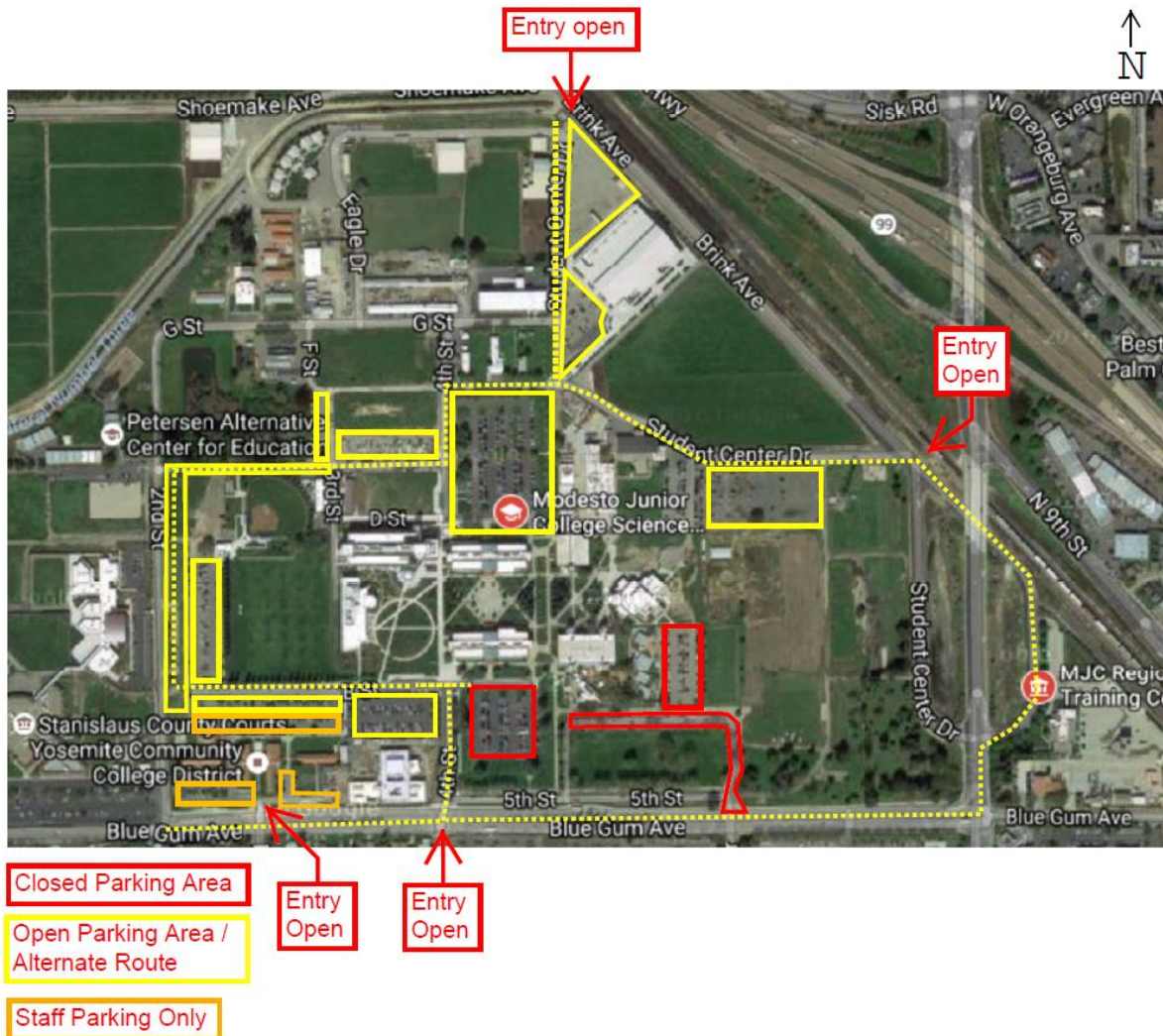




WEST CAMPUS ROADS PHASE IIA (AREA 5)

Work this week: Contractor will work on irrigation, concrete flatwork, and final grading.

- Access:** The west loop road is now open.
Noise: Extreme noise due to heavy construction equipment.
Parking: All parking lots are open with the exception of Lot 209 & 211.
Utilities: None anticipated.
Odors: None anticipated.
Dust: Moderate impact due to construction related activities.



If there are any questions or concerns please contact Kitchell CEM, located at
2201 Blue Gum Ave., Modesto CA 95358 Tel: 575-6991 E-mail: avalencia@kitchell.com