



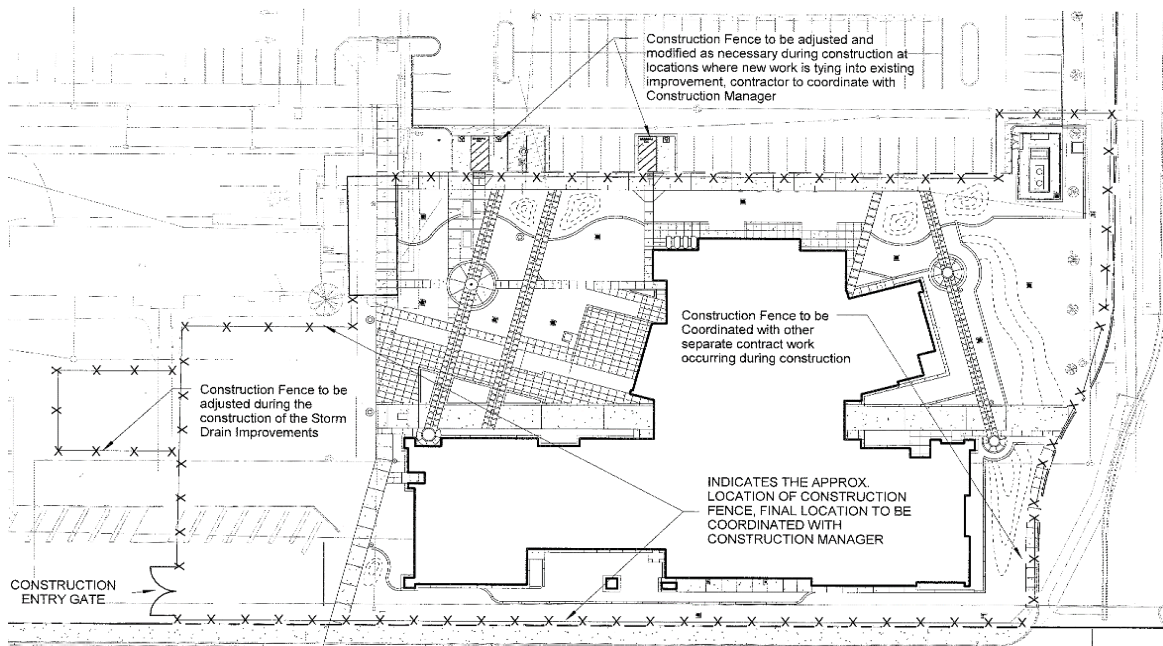
UPDATES & ACTIVITIES THAT MAY IMPACT CAMPUS OPERATION

Week of July 25, 2016

DISTRICT OFFICE BUILDING

Work this week: Contractor will continue to work on lighting, interior paint, pulling wire, site grading, site concrete, electrical finish, and landscaping.

Access: None
Noise: Moderate due to construction equipment.
Parking: None
Utilities: None
Odors: None
Dust: Minor impact.



X-X-X Construction fencing. Restricted access.



WESTERLY ROADS AREAS 3 & 4

Work this week: Backfilling of trenches for the newly installed water line will occur. Grading all along 2nd Street will also be occurring.

Access: Lot 207 is now open for parking.

Noise: Extreme noise due to heavy construction equipment.

Parking: Parking Lot 207 is now open for use along with the gravel lot across E Street.

Utilities: None anticipated.

Odors: None anticipated.

Dust: Moderate impact due to construction related activities.





Measure E Bond Program MODESTO JUNIOR COLLEGE CAMPUS CONSTRUCTION UPDATE

Page 3 of 4

WESTERLY ROADS AREAS 5 & 6

Work this week: Surveying & rough grading will occur all along B Street in front of Me-Wuk down towards the hammer throw field.

Access: Lot 207 is now open for parking. Gravel lot across E Street open.

Noise: Extreme noise due to heavy construction equipment.

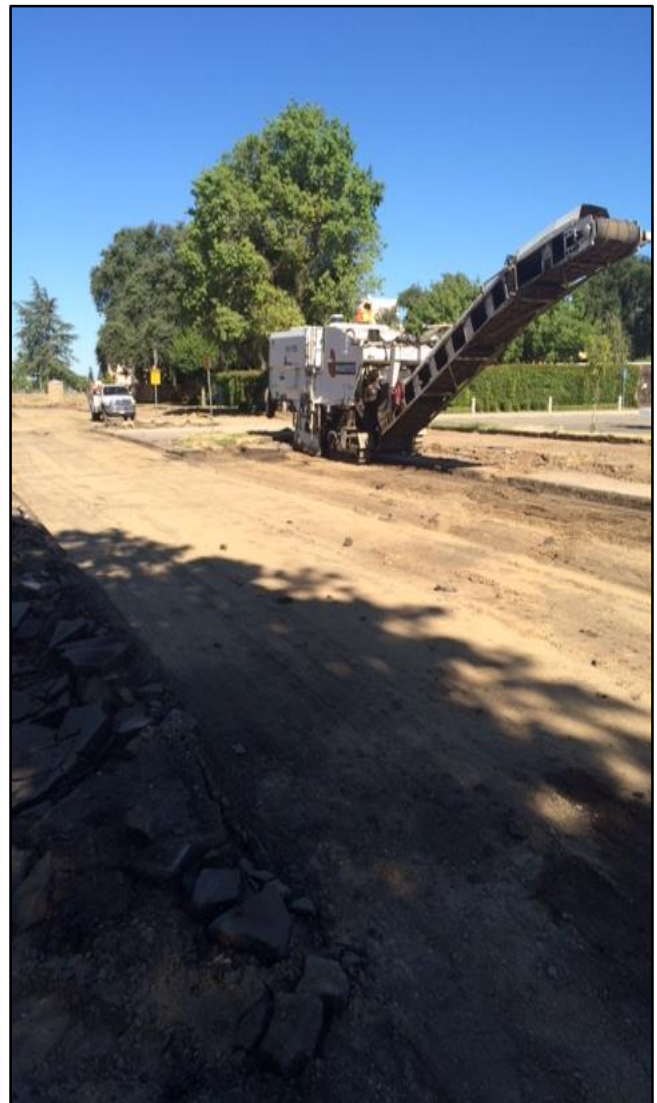
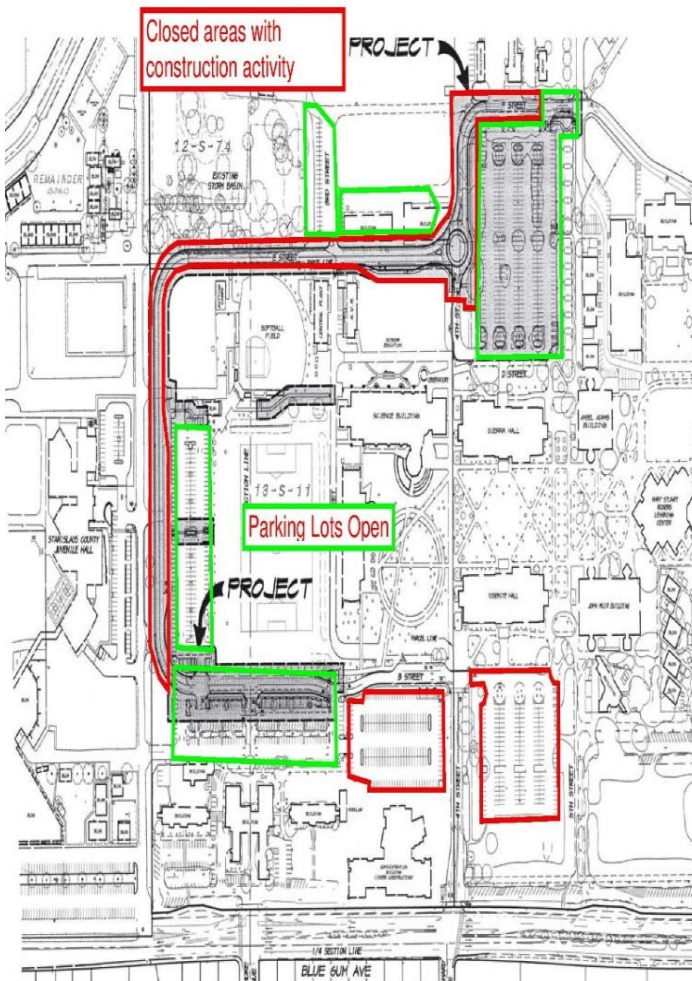
Parking: Parking Lot 209 & 2011 closed.

Utilities: None anticipated.

Odors: None anticipated.

Dust: Moderate impact due to construction related activities.

MJC West Campus Westerly Roads Areas 3 & 4 / 5 & 6
Projects

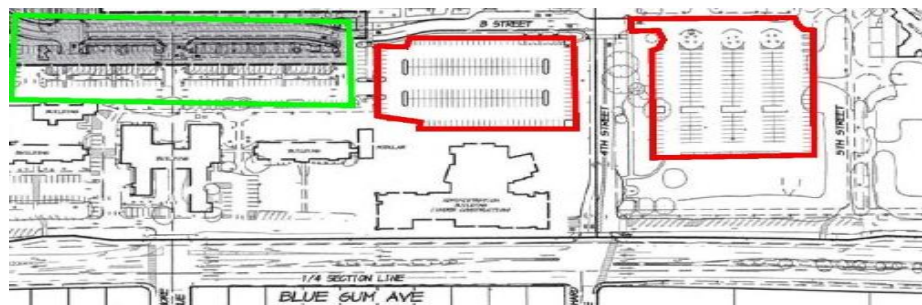




SOLAR ARRAY PROJECT

Work this week: Contractor continues to work on electrical installations and site cleanup.

Access: None.
Noise: Minimal noise due to heavy construction equipment.
Parking: Lot 215 will be closed.
Utilities: None.
Odors: None anticipated.
Dust: Minimal impact due to construction related activities.



Under Construction

Available Parking



If there are any questions or concerns please contact Kitchell CEM, located at
2201 Blue Gum Ave., Modesto CA 95358 Tel: 575-6991 E-mail: avalencia@kitchell.com