



# Measure E Bond Program MODESTO JUNIOR COLLEGE CAMPUS CONSTRUCTION UPDATE



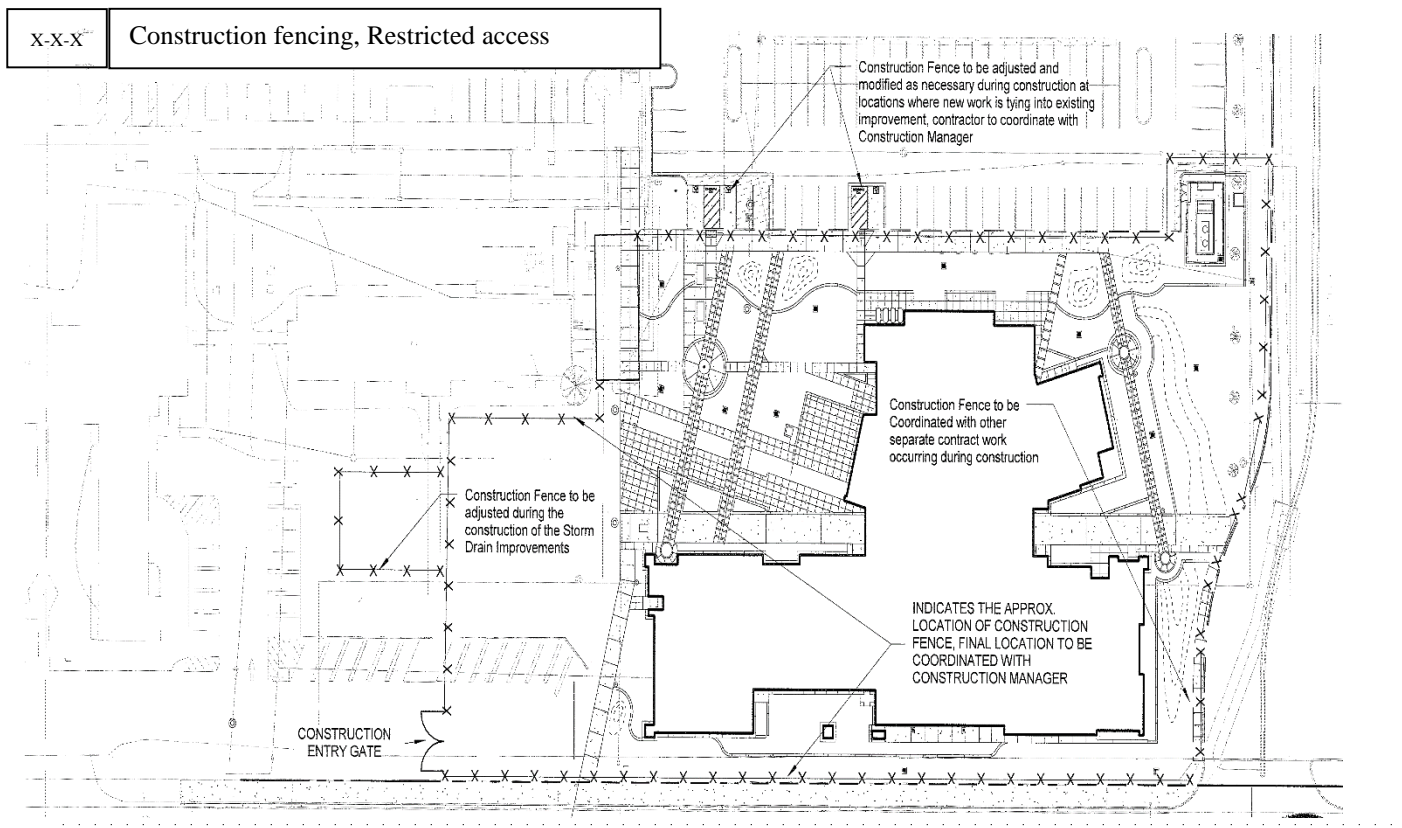
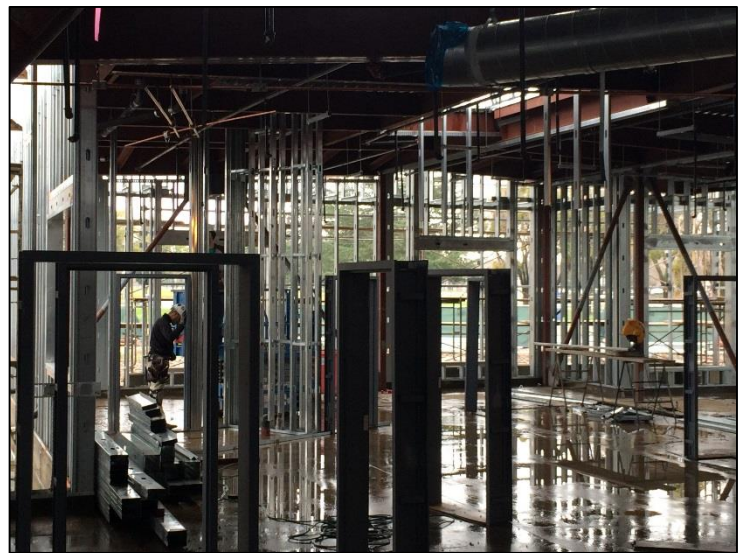
## UPDATES & ACTIVITIES THAT MAY IMPACT CAMPUS OPERATION

*Week of January 11, 2016*

### DISTRICT OFFICE BUILDING

**Work this week:** Contractor will be working on mechanical, electrical, and plumbing (MEP) rough-in and wall framing.

**Access:** None  
**Noise:** Moderate due to construction equipment  
**Parking:** None  
**Utilities:** None  
**Odors:** None  
**Dust:** Minor impact



If there are any questions or concerns contact Kitchell CEM, Measure E Bond Construction Manager, located at 2201 Blue Gum Ave., Modesto CA 95358 Tel: 575-6991 Email [mkenedy@kitchell.com](mailto:mkenedy@kitchell.com)