



Measure E Bond Program MODESTO JUNIOR COLLEGE CAMPUS CONSTRUCTION UPDATE



UPDATES & ACTIVITIES THAT MAY IMPACT CAMPUS OPERATION

Week of November 9, 2015

DISTRICT OFFICE BUILDING

Work this week: Contractor will be working on Mechanical, electrical, and plumbing (MEP) rough in. Also, wall framing will take place this week.

Access: None.

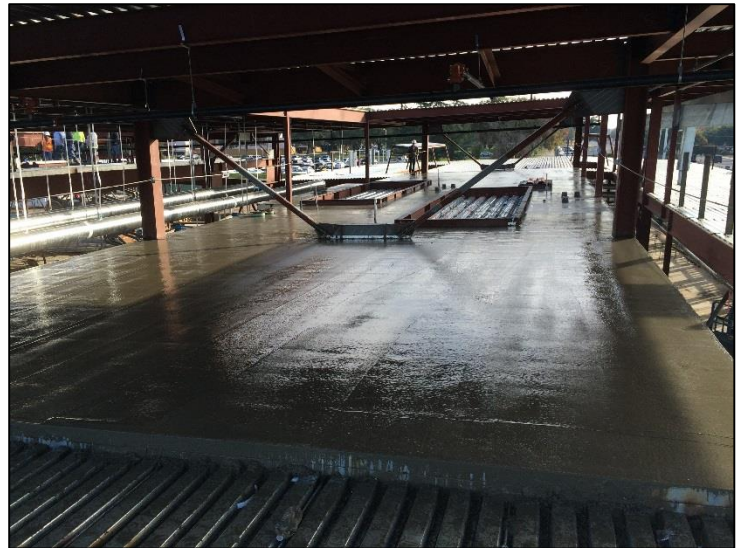
Noise: Moderate due to construction equipment.

Parking: Some parking loss for duration of project.

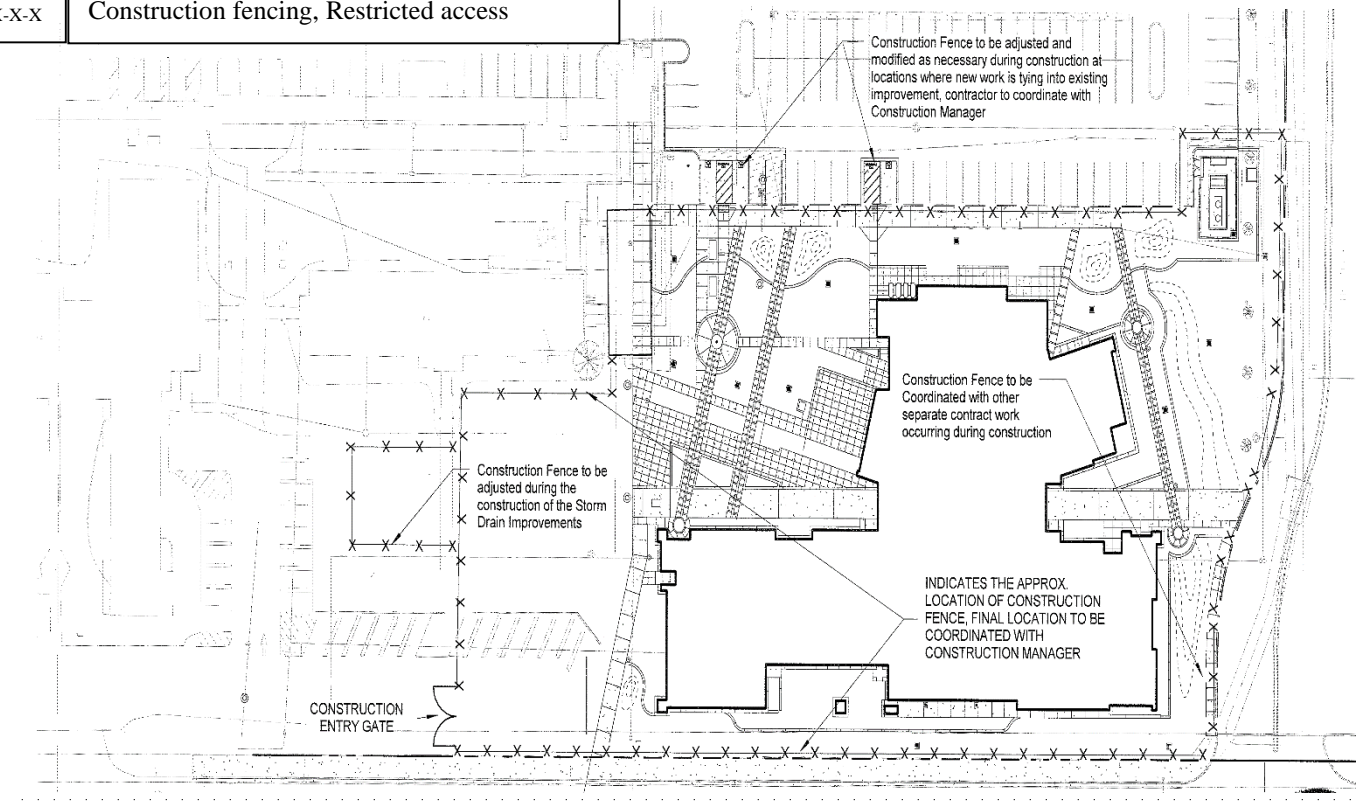
Utilities: None.

Odors: None

Dust: Minor impact.



X-X-X Construction fencing, Restricted access



If there are any questions or concerns contact Kitchell CEM, Measure E Bond Construction Manager, located at 2201 Blue Gum Ave., Modesto CA 95358 Tel: 575-6991 Email mkenedy@kitchell.com